

NEK7 RABBIT MAB

Cat.#: N262591

Product Name: Anti-NEK7 Rabbit Monoclonal Antibody

Synonyms: NEK7; NimA related protein kinase 7

UNIPROT ID: Q8TDX7

Background: Protein kinase which plays an important role in mitotic cell cycle progression. Required for microtubule nucleation activity of the centrosome, robust mitotic spindle formation and cytokinesis. Phosphorylates RPS6KB1.

Immunogen: A synthetic peptide of human NEK7

Applications: WB,IP

Recommended Dilutions: WB: 1/500-1/1000 IP: 1/20

Host Species: Rabbit

Clonality: Rabbit Monoclonal

Clone ID: R04-7A1

MW: Calculated MW: 35 kDa; Observed MW: 35 kDa

Isotype: IgG

Purification: Affinity Purified

Species Reactivity: Mouse,Rat

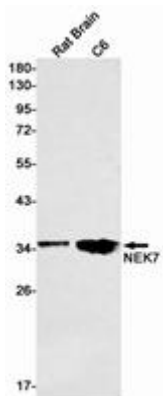
Conjugation: Unconjugated

Modification: Unmodified

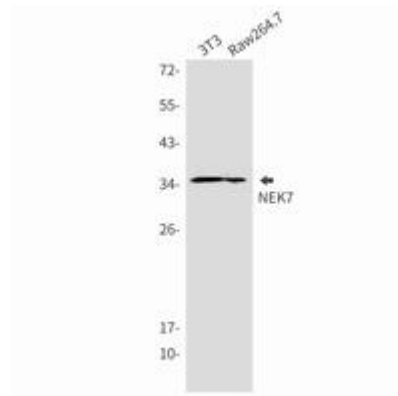
Constituents: PBS (without Mg²⁺ and Ca²⁺), pH 7.3 containing 50% glycerol, 0.5% BSA and 0.02% sodium azide

Research Areas: Cell Biology

Storage & Shipping: Store at -20°C. Avoid repeated freezing and thawing



Western blot analysis of NEK7 in rat Brain, C6 lysates using NEK7 antibody.



Western blot analysis of NEK7 in 3T3, Raw264.7 lysates using NEK7 antibody.