

NEK8 RABBIT PAB

Cat.#: S217127

Product Name: Anti-NEK8 Rabbit Polyclonal Antibody

Synonyms: JCK; NPHP9; RHPD2; NEK12A

UNIPROT ID: Q86SG6 (Gene Accession - BC112240)

Background: This gene encodes a member of the serine/threonine protein kinase family related to NIMA (never in mitosis, gene A) of *Aspergillus nidulans*. The encoded protein may play a role in cell cycle progression from G2 to M phase. Mutations in the related mouse gene are associated with a disease phenotype that closely parallels the juvenile autosomal recessive form of polycystic kidney disease in humans.

Immunogen: Fusion protein of human NEK8

Applications: ELISA, IHC

Recommended Dilutions: IHC: 50–200; ELISA: 1000–5000

Host Species: Rabbit

Clonality: Rabbit Polyclonal

Isotype: Immunogen-specific rabbit IgG

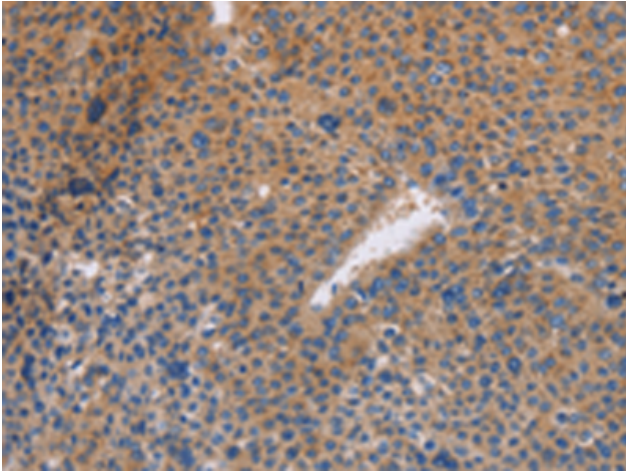
Purification: Antigen affinity purification

Species Reactivity: Human, Mouse, Rat

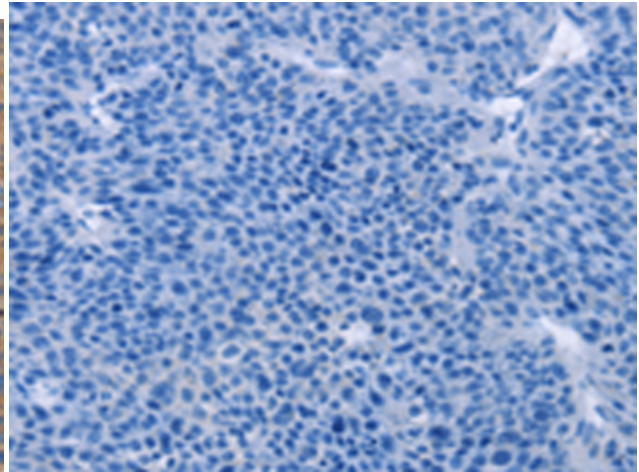
Constituents: PBS (without Mg²⁺ and Ca²⁺), pH 7.4, 150 mM NaCl, 0.05% Sodium Azide and 40% glycerol

Research Areas: Epigenetics and Nuclear Signaling, Cancer

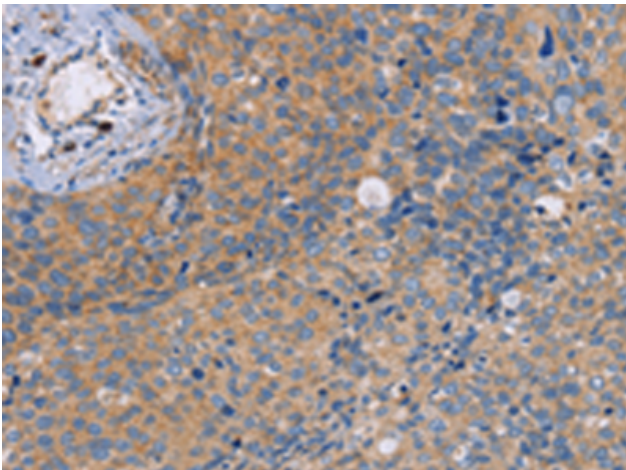
Storage & Shipping: Store at -20°C. Avoid repeated freezing and thawing



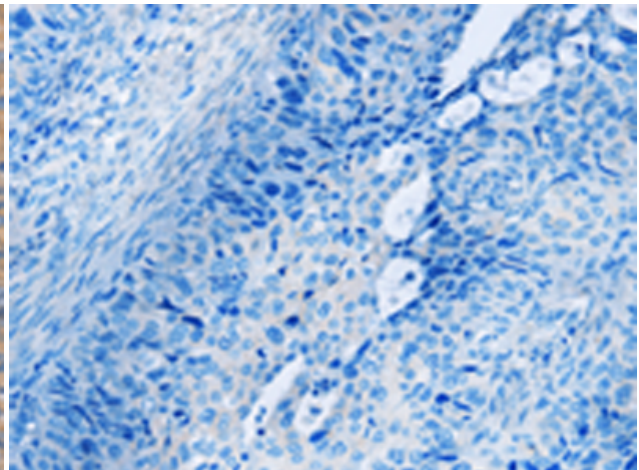
Immunohistochemistry analysis of paraffin embedded Human liver cancer tissue using 217127(NEK8 Antibody) at a dilution of 1/30(Cytoplasm).



In comparison with the IHC on the left, the same paraffin-embedded Human liver cancer tissue is first treated with the fusion protein and then with 217127(Anti-NEK8 Antibody) at dilution 1/30.



The image on the left is immunohistochemistry of paraffin-embedded Human cervical cancer tissue using 217127(Anti-NEK8 Antibody) at a dilution of 1/30.



In comparison with the IHC on the left, the same paraffin-embedded Human cervical cancer tissue is first treated with fusion protein and then with D221842(Anti-NEK8 Antibody) at dilution 1/30.