

NEMF RABBIT PAB

Cat.#: S220886

Product Name: Anti-NEMF Rabbit Polyclonal Antibody

Synonyms: NY-CO-1; SDCCAG1

UNIPROT ID: O60524 (Gene Accession - NP_004704)

Background: SDCCAG1, which called NY-CO-1, from a colon cancer cDNA library. The deduced 362-amino acid protein contains a nuclear targeting signal. Expressed in brain, heart, liver, lung, spleen, and skeletal muscle. Also expressed at lower levels in stomach and testis.

Immunogen: Synthetic peptide of human NEMF

Applications: ELISA, IHC

Recommended Dilutions: IHC: 25-100; ELISA: 1000-2000

Host Species: Rabbit

Clonality: Rabbit Polyclonal

Isotype: Immunogen-specific rabbit IgG

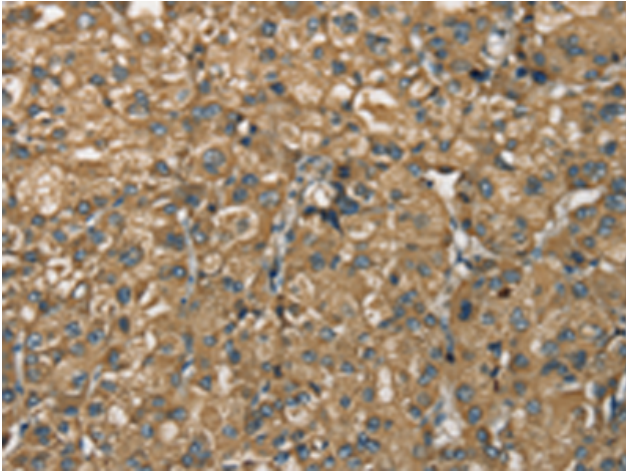
Purification: Antigen affinity purification

Species Reactivity: Human

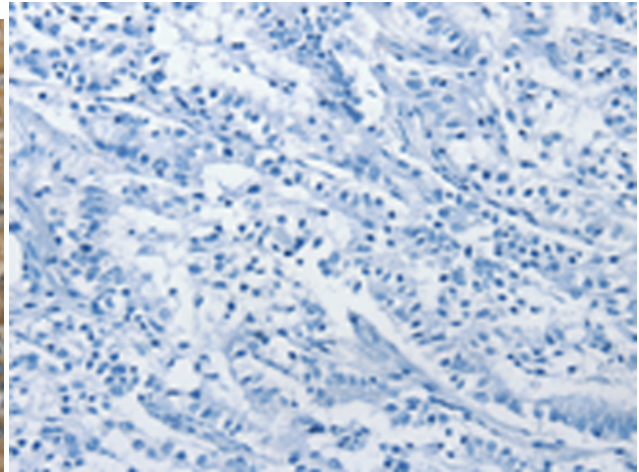
Constituents: PBS (without Mg²⁺ and Ca²⁺), pH 7.4, 150 mM NaCl, 0.05% Sodium Azide and 40% glycerol

Research Areas: Cancer

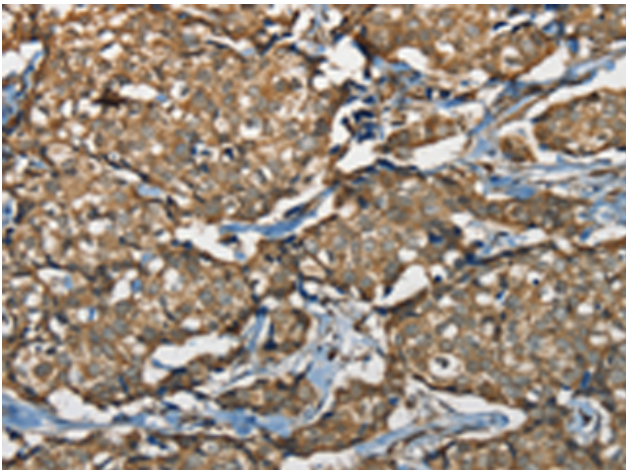
Storage & Shipping: Store at -20°C. Avoid repeated freezing and thawing



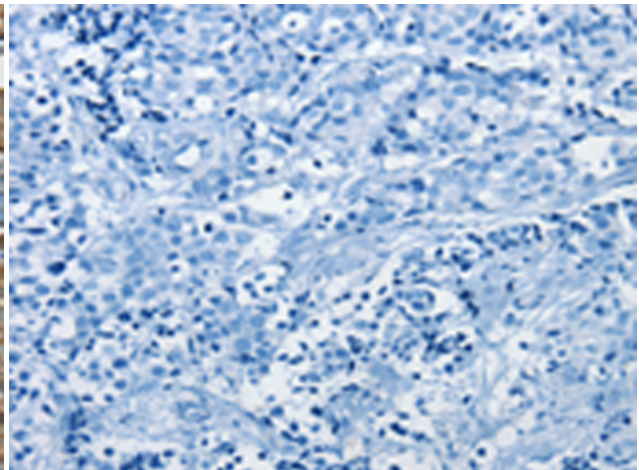
Immunohistochemistry analysis of paraffin embedded Human liver cancer tissue using 220886(NEMF Antibody) at a dilution of 1/30(Cytoplasm).



In comparison with the IHC on the left, the same paraffin-embedded Human liver cancer tissue is first treated with the synthetic peptide and then with 220886(Anti-NEMF Antibody) at dilution 1/30.



The image on the left is immunohistochemistry of paraffin-embedded Human breast cancer tissue using 220886(Anti-NEMF Antibody) at a dilution of 1/30.



In comparison with the IHC on the left, the same paraffin-embedded Human breast cancer tissue is first treated with synthetic peptide and then with D262174(Anti-NEMF Antibody) at dilution 1/30.