

NES RABBIT PAB

Cat.#: S221288

Product Name: Anti-NES Rabbit Polyclonal Antibody

Synonyms: Nbla00170

UNIPROT ID: P48681 (Gene Accession - NP_006608)

Background: This gene encodes a member of the intermediate filament protein family and is expressed primarily in nerve cells.

Immunogen: Synthetic peptide of human NES

Applications: ELISA, IHC

Recommended Dilutions: IHC: 25-100; ELISA: 5000-10000

Host Species: Rabbit

Clonality: Rabbit Polyclonal

Isotype: Immunogen-specific rabbit IgG

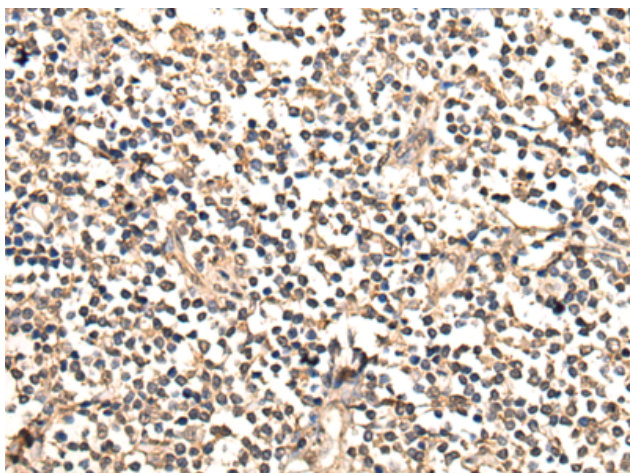
Purification: Antigen affinity purification

Species Reactivity: Human

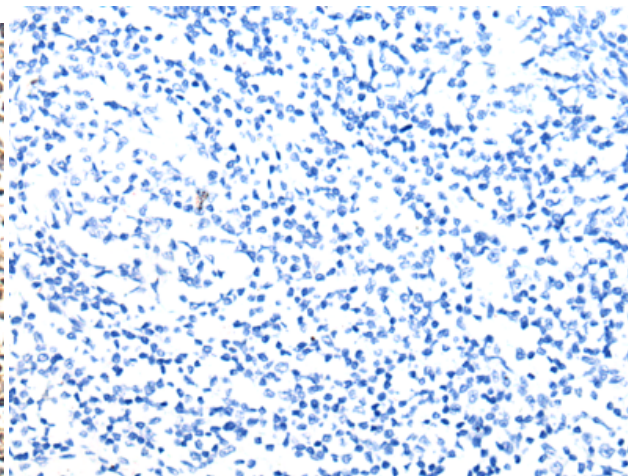
Constituents: PBS (without Mg²⁺ and Ca²⁺), pH 7.4, 150 mM NaCl, 0.05% Sodium Azide and 40% glycerol

Research Areas: Cardiovascular, Cancer, Neuroscience, Stem Cells

Storage & Shipping: Store at -20°C. Avoid repeated freezing and thawing



Immunohistochemistry analysis of paraffin embedded Human tonsil tissue using 221288(NES Antibody) at a dilution of 1/30(Cytoplasm).



In comparison with the IHC on the left, the same paraffin-embedded Human tonsil tissue is first treated with the synthetic peptide and then with 221288(Anti-NES Antibody) at dilution 1/30.