

## NEUROFILAMENT HEAVY POLYPEPTIDE RABBIT MAB

**Cat.#:** N262598

**Product Name:** Anti-Neurofilament Heavy Polypeptide Rabbit Monoclonal Antibody

**Synonyms:** NEFH; KIAA0845; NFH; Neurofilament heavy polypeptide; NF-H; 200 kDa neurofilament protein; Neurofilament triplet H protein

**UNIPROT ID:** P12036

**Background:** Neurofilaments usually contain three intermediate filament proteins: L, M, and H which are involved in the maintenance of neuronal caliber. NF-H has an important function in mature axons that is not subserved by the two smaller NF proteins.

**Immunogen:** Recombinant protein of human Neurofilament heavy polypeptide

**Applications:** WB,IHC-F,IHC-P,ICC/IF

**Recommended Dilutions:** WB: 1/500-1/1000 IHC: 1/50-1/100 IF: 1/50-1/200

**Host Species:** Rabbit

**Clonality:** Rabbit Monoclonal

**Clone ID:** R07-316

**MW:** Calculated MW: 112 kDa; Observed MW: 180-220 kDa

**Isotype:** IgG

**Purification:** Affinity Purified

**Species Reactivity:** Human,Mouse,Rat

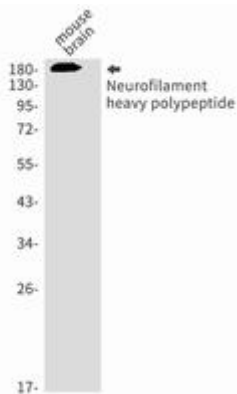
**Conjugation:** Unconjugated

**Modification:** Unmodified

**Constituents:** PBS (without Mg<sup>2+</sup> and Ca<sup>2+</sup>), pH 7.3 containing 50% glycerol, 0.5% BSA and 0.02% sodium azide

**Research Areas:** Neuroscience Mature Neurons

**Storage & Shipping:** Store at -20°C. Avoid repeated freezing and thawing



Western blot analysis of Neurofilament heavy polypeptide in mouse brain lysates using Neurofilament Heavy Polypeptide antibody.