

## NF-KB P65 RABBIT MAB

**Cat.#:** N262606

**Product Name:** Anti-NF-KB p65 Rabbit Monoclonal Antibody

**Synonyms:** NFKB3; RELA; TF65; Transcription factor p65; p65; NFkB

**UNIPROT ID:** Q04206

**Background:** NFKB1 (MIM 164011) or NFKB2 (MIM 164012) is bound to REL (MIM 164910), RELA, or RELB (MIM 604758) to form the NFKB complex. The p50 (NFKB1)/p65 (RELA) heterodimer is the most abundant form of NFKB. The NFKB complex is inhibited by I-kappa-B proteins (NFKBIA, MIM 164008 or NFKBIB, MIM 604495), which inactivate NFKB by trapping it in the cytoplasm.

**Immunogen:** A synthetic peptide of human NF-kB p65

**Applications:** WB,IHC-F,IHC-P,ICC/IF,IP

**Recommended Dilutions:** WB: 1/500-1/1000 IHC: 1/50-1/100 IF: 1/50-1/200 IP: 1/20

**Host Species:** Rabbit

**Clonality:** Rabbit Monoclonal

**Clone ID:** R09-3H2

**MW:** Calculated MW: 60 kDa; Observed MW: 65 kDa

**Isotype:** IgG

**Purification:** Affinity Purified

**Species Reactivity:** Human,Mouse

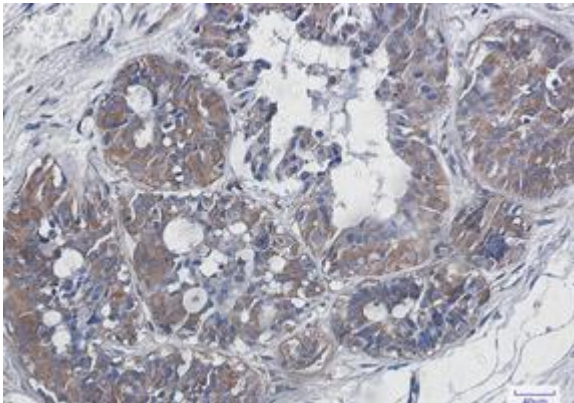
**Conjugation:** Unconjugated

**Modification:** Unmodified

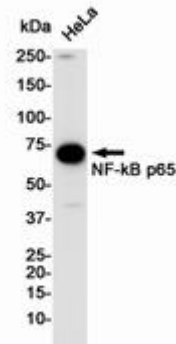
**Constituents:** PBS (without Mg<sup>2+</sup> and Ca<sup>2+</sup>), pH 7.3 containing 50% glycerol, 0.5% BSA and 0.02% sodium azide

**Research Areas:** apoptosis - Bcl-2 family

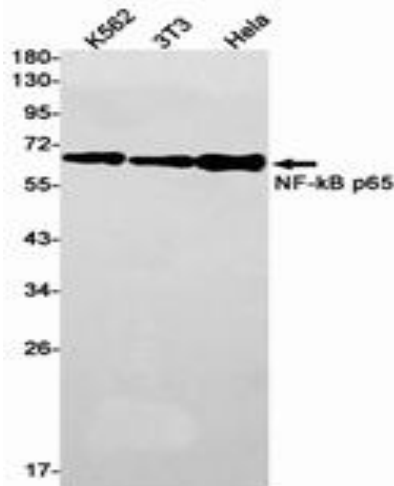
**Storage & Shipping:** Store at -20°C. Avoid repeated freezing and thawing



Immunohistochemistry analysis of paraffin-embedded Human breast cancer using NF-KB p65 antibody. High-pressure and temperature Sodium Citrate pH 6.0 was used for antigen retrieval.



Western blot analysis of NF-KB p65 in HeLa lysates using NF-KB p65 antibody.



Western blot analysis of NF-KB p65 in K562, 3T3, HeLa lysates using NF-KB p65 antibody.