

NF-KB P65 RABBIT PAB

Cat.#: N225266

Product Name: Anti-NF-KB p65 Rabbit pAb

Synonyms: NFKB3; RELA; TF65; Transcription factor p65; p65; NFkB

UNIPROT ID: Q04206

Background: NFKB1 (MIM 164011) or NFKB2 (MIM 164012) is bound to REL (MIM 164910), RELA, or RELB (MIM 604758) to form the NFKB complex. The p50 (NFKB1)/p65 (RELA) heterodimer is the most abundant form of NFKB. The NFKB complex is inhibited by I-kappa-B proteins (NFKBIA, MIM 164008 or NFKBIB, MIM 604495), which inactivate NFKB by trapping it in the cytoplasm.

Immunogen: Peptide sequence around aa.534~538 (F-S-S-I-A) derived from Human NFkB-p65.

Applications: WB,IHC-P

Recommended Dilutions: WB: 1/500-1/1000 IHC: 1/50-1/100

Host Species: Rabbit

Clonality: Rabbit Polyclonal

Clone ID: -

MW: Calculated MW: 60 kDa; Observed MW: 65 kDa

Isotype: IgG

Purification: Affinity Chromatography

Species Reactivity: Human,Mouse,Rat

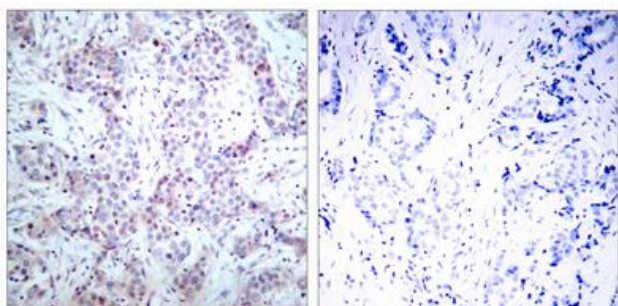
Conjugation: Unconjugated

Modification: Unmodified

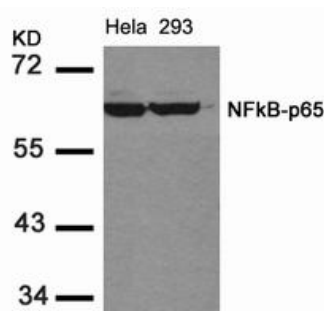
Constituents: PBS (without Mg²⁺ and Ca²⁺), pH 7.3 containing 50% glycerol, 0.5% BSA and 0.02% sodium azide

Research Areas: Cell Biology

Storage & Shipping: Store at -20°C. Avoid repeated freezing and thawing



Immunohistochemistry analysis of paraffin-embedded Human breast carcinoma tissue using NF-KBp65 (Ab536) antibody(left) or the same antibody. High-pressure and temperature Sodium Citrate pH 6.0 was used for antigen retrieval.Sample with blocking peptide on the right.



Western blot analysis of NF-KB p65 in HeLa and 293 lysates using NF-KBp65 (Ab536) antibody.