

NF2 RABBIT MAB

Cat.#: N262601

Product Name: Anti-NF2 Rabbit Monoclonal Antibody

Synonyms: ACN; BANF; Merlin; Moesin ezrin radixin like protein; Neurofibromatosis 2; Neurofibromin 2; Nf2; SCH; Schwannomerlin

UNIPROT ID: P35240

Background: Probable regulator of the Hippo/SWH (Sav/Wts/Hpo) signaling pathway, a signaling pathway that plays a pivotal role in tumor suppression by restricting proliferation and promoting apoptosis.

Immunogen: A synthetic peptide of human NF2/Merlin

Applications: WB,IP

Recommended Dilutions: WB: 1/500-1/1000 IP: 1/20

Host Species: Rabbit

Clonality: Rabbit Monoclonal

Clone ID: R07-1A6

MW: Calculated MW: 70 kDa; Observed MW: 70 kDa

Isotype: IgG

Purification: Affinity Purified

Species Reactivity: Human,Mouse,Rat

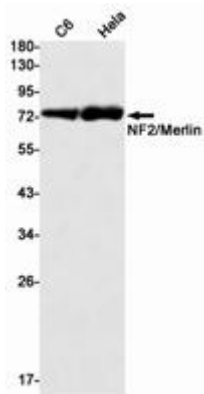
Conjugation: Unconjugated

Modification: Unmodified

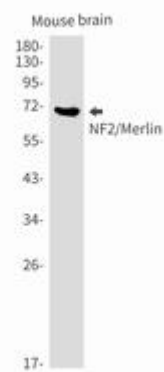
Constituents: PBS (without Mg²⁺ and Ca²⁺), pH 7.3 containing 50% glycerol, 0.5% BSA and 0.02% sodium azide

Research Areas: Neuroscience

Storage & Shipping: Store at -20°C. Avoid repeated freezing and thawing



Western blot analysis of NF2/Merlin in C6, HeLa lysates using NF2/Merlin antibody.



Western blot analysis of NF2/Merlin in mouse brain lysates using NF2 antibody.