

NF2 RABBIT PAB

Cat.#: N225853

Product Name: Anti-NF2 Rabbit pAb

Synonyms: ACN; BANF; Merlin; Moesin ezrin radixin like protein; Neurofibromatosis 2; Neurofibromin 2; Nf2; SCH; Schwannomerlin

UNIPROT ID: P35240

Background: Probable regulator of the Hippo/SWH (Sav/Wts/Hpo) signaling pathway, a signaling pathway that plays a pivotal role in tumor suppression by restricting proliferation and promoting apoptosis.

Immunogen: A synthesized peptide derived from human NF2 / Merlin

Applications: WB,IP

Recommended Dilutions: WB: 1/500-1/1000 IP: 1/20

Host Species: Rabbit

Clonality: Rabbit Polyclonal

Clone ID: -

MW: Calculated MW: 70 kDa; Observed MW: 70 kDa

Isotype: IgG

Purification: Affinity Chromatography

Species Reactivity: Human,Mouse,Rat

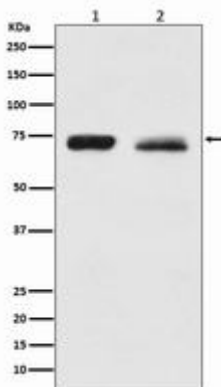
Conjugation: Unconjugated

Modification: Unmodified

Constituents: PBS (without Mg²⁺ and Ca²⁺), pH 7.3 containing 50% glycerol, 0.5% BSA and 0.02% sodium azide

Research Areas: Neuroscience

Storage & Shipping: Store at -20°C. Avoid repeated freezing and thawing



Western blot analysis of NF2 / Merlin in (1) HeLa lysates; (2) PC-3 lysates using NF2 antibody.



Product Description

Pioneering GTPase and Oncogene Product Development since 2010
