

NFKBIE RABBIT PAB

Cat.#: S216287

Product Name: Anti-NFKBIE Rabbit Polyclonal Antibody

Synonyms: IKBE

UNIPROT ID: O00221 (Gene Accession - BC011676)

Background: The protein encoded by this gene binds to components of NF-kappa-B, trapping the complex in the cytoplasm and preventing it from activating genes in the nucleus. Phosphorylation of the encoded protein targets it for destruction by the ubiquitin pathway, which activates NF-kappa-B by making it available to translocate to the nucleus. NFKBIE protein expression is up-regulated following NF-kappa-B activation and during myelopoiesis. NFKBIE is able to inhibit NF-kappa-B-directed transactivation via cytoplasmic retention of REL proteins. NFKB1 or NFKB2 is bound to REL, RELA, or RELB to form the NF-kappa-B transcription factor complex. The NF-kappa-B complex is inhibited by I-kappa-B proteins (NFKBIA or NFKBIB), which inactivate NF-kappa-B by trapping it in the cytoplasm.

Immunogen: Fusion protein of human NFKBIE

Applications: ELISA, WB, IHC

Recommended Dilutions: IHC: 25-100;WB: 200-1000;ELISA: 1000-2000

Host Species: Rabbit

Clonality: Rabbit Polyclonal

Isotype: Immunogen-specific rabbit IgG

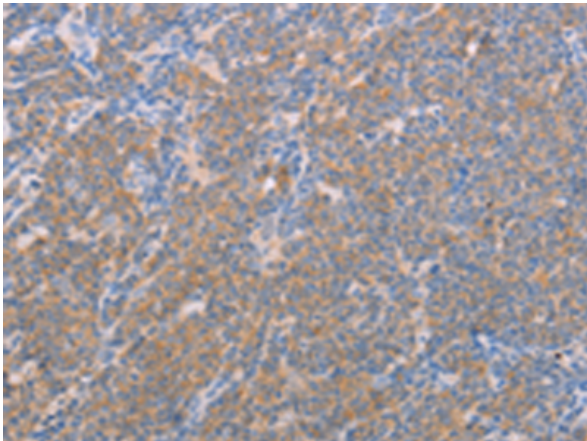
Purification: Antigen affinity purification

Species Reactivity: Human, Mouse

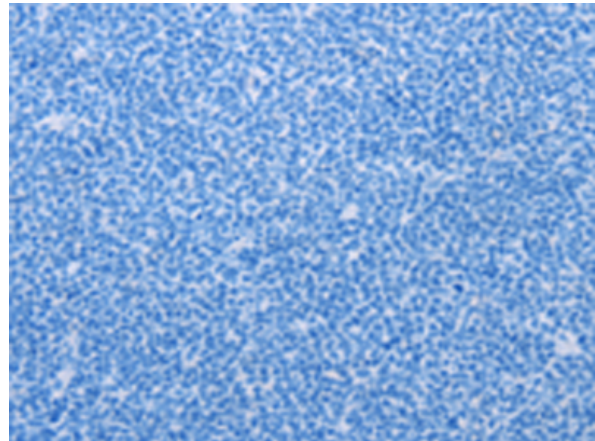
Constituents: PBS (without Mg²⁺ and Ca²⁺), pH 7.4, 150 mM NaCl, 0.05% Sodium Azide and 40% glycerol

Research Areas: Signal Transduction, Epigenetics and Nuclear Signaling, Immunology

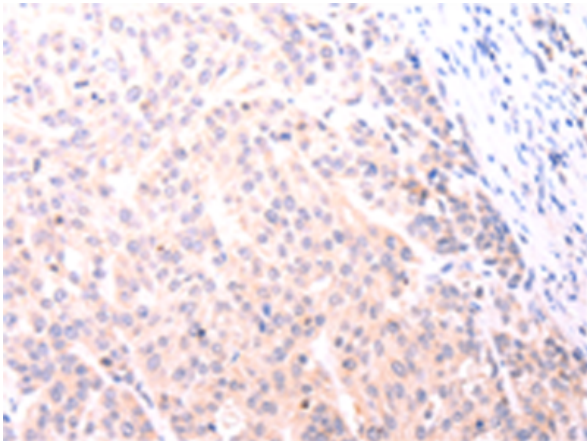
Storage & Shipping: Store at -20°C. Avoid repeated freezing and thawing



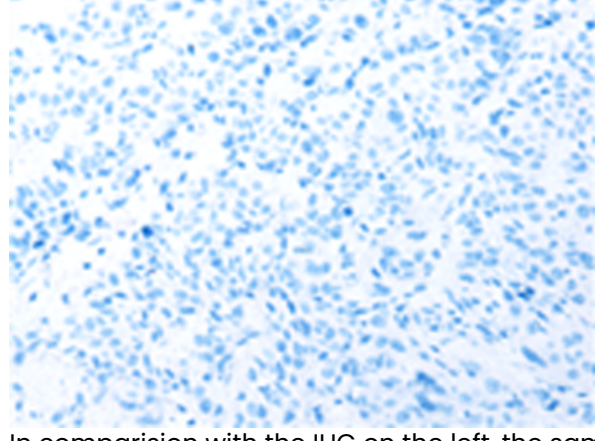
Immunohistochemistry analysis of paraffin embedded Human lymphoma tissue using 216287(NFKBIE Antibody) at a dilution of 1/25(Cytoplasm).



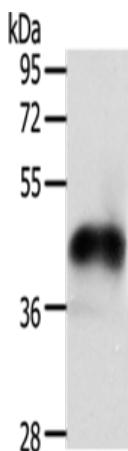
In comparison with the IHC on the left, the same paraffin-embedded Human lymphoma tissue is first treated with the fusion protein and then with 216287(Anti-NFKBIE Antibody) at dilution 1/25.



The image on the left is immunohistochemistry of paraffin-embedded Human esophagus cancer tissue using 216287(Anti-NFKBIE Antibody) at a dilution of 1/25.



In comparison with the IHC on the left, the same paraffin-embedded Human esophagus cancer tissue is first treated with fusion protein and then with D220137(Anti-NFKBIE Antibody) at dilution 1/25.



Gel: 12%SDS-PAGE, Lysate: 40 µg;
Lane: PC3 cells;
Primary antibody: 216287(NFKBIE Antibody) at dilution 1/250;
Secondary antibody: Goat anti rabbit IgG at 1/8000 dilution;
Exposure time: 30 minutes



Product Description

Pioneering GTPase and Oncogene Product Development since 2010
