

NHLRC2 RABBIT PAB

Cat.#: S219357

Product Name: Anti-NHLRC2 Rabbit Polyclonal Antibody

Synonyms: FINCA

UNIPROT ID: Q8NBF2 (Gene Accession - BC032598)

Background: Required for normal embryonic development.

Immunogen: Fusion protein of human NHLRC2

Applications: ELISA, IHC

Recommended Dilutions: IHC: 150-300; ELISA: 5000-10000

Host Species: Rabbit

Clonality: Rabbit Polyclonal

Isotype: Immunogen-specific rabbit IgG

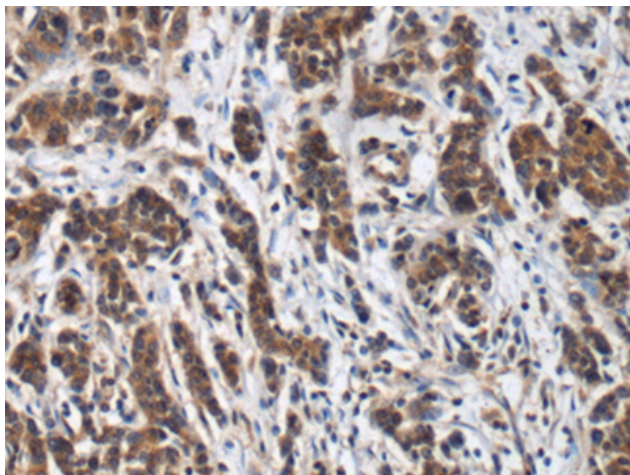
Purification: Antigen affinity purification

Species Reactivity: Human

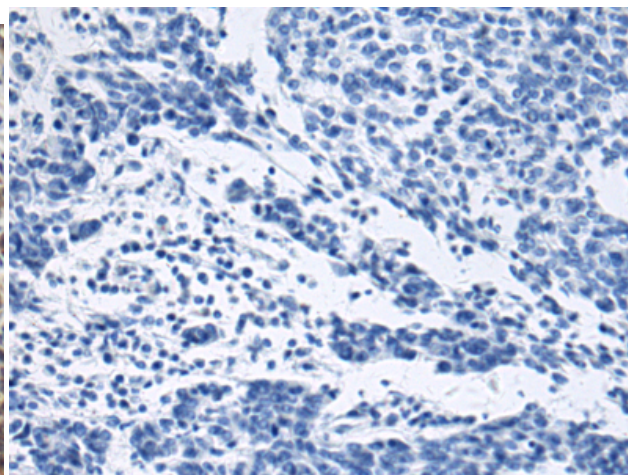
Constituents: PBS (without Mg²⁺ and Ca²⁺), pH 7.4, 150 mM NaCl, 0.05% Sodium Azide and 40% glycerol

Research Areas: Cell Biology

Storage & Shipping: Store at -20°C. Avoid repeated freezing and thawing



Immunohistochemistry analysis of paraffin embedded Human colorectal cancer tissue using 219357(NHLRC2 Antibody) at a dilution of 1/120(Cytoplasm).



In comparison with the IHC on the left, the same paraffin-embedded Human colorectal cancer tissue is first treated with the fusion protein and then with 219357(Anti-NHLRC2 Antibody) at dilution 1/120.