

## NICASTRIN RABBIT MAB

**Cat.#:** N262609

**Product Name:** Anti-Nicastrin Rabbit Monoclonal Antibody

**Synonyms:** APH2; Ncstn; NCT; Nicastrin

**UNIPROT ID:** Q92542

**Background:** Essential subunit of the gamma-secretase complex, an endoprotease complex that catalyzes the intramembrane cleavage of integral membrane proteins such as Notch receptors and APP (beta-amyloid precursor protein). It probably represents a stabilizing cofactor required for the assembly of the gamma-secretase complex.

**Immunogen:** A synthetic peptide of human Nicastrin

**Applications:** WB,IP

**Recommended Dilutions:** WB: 1/500-1/1000 IP: 1/20

**Host Species:** Rabbit

**Clonality:** Rabbit Monoclonal

**Clone ID:** R02-9E6

**MW:** Calculated MW: 78 kDa; Observed MW: 110-120 kDa

**Isotype:** IgG

**Purification:** Affinity Purified

**Species Reactivity:** Human,Mouse,Rat

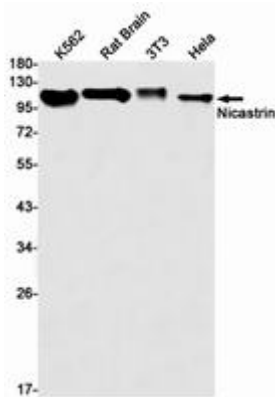
**Conjugation:** Unconjugated

**Modification:** Unmodified

**Constituents:** PBS (without Mg<sup>2+</sup> and Ca<sup>2+</sup>), pH 7.3 containing 50% glycerol, 0.5% BSA and 0.02% sodium azide

**Research Areas:** Neuroscience,Alzheimer's disease

**Storage & Shipping:** Store at -20°C. Avoid repeated freezing and thawing



Western blot analysis of Nicastrin in K562, rat Brain, 3T3, HeLa lysates using Nicastrin antibody.