

NID2 RABBIT PAB

Cat.#: S218933

Product Name: Anti-NID2 Rabbit Polyclonal Antibody

Synonyms: NID-2

UNIPROT ID: Q14112 (Gene Accession - BC035608)

Background: This gene encodes a member of the nidogen family of basement membrane proteins. This protein is a cell-adhesion protein that binds collagens I and IV and laminin and may be involved in maintaining the structure of the basement membrane.

Immunogen: Fusion protein of human NID2

Applications: ELISA, IHC

Recommended Dilutions: IHC: 50-300; ELISA: 5000-10000

Host Species: Rabbit

Clonality: Rabbit Polyclonal

Isotype: Immunogen-specific rabbit IgG

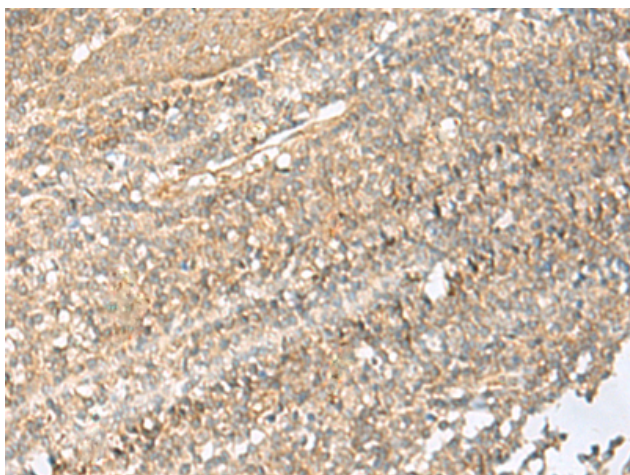
Purification: Antigen affinity purification

Species Reactivity: Human, Mouse, Rat

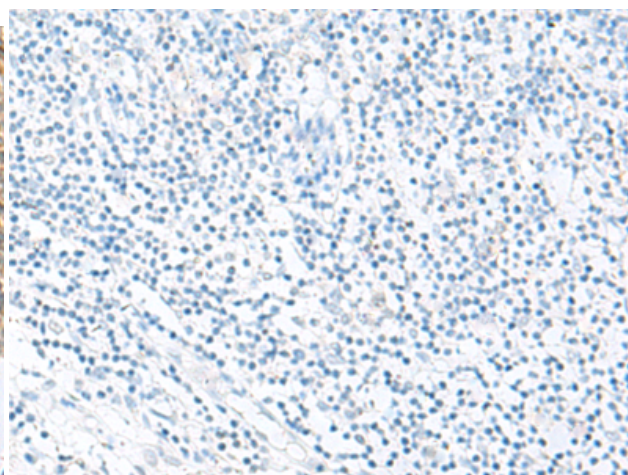
Constituents: PBS (without Mg²⁺ and Ca²⁺), pH 7.4, 150 mM NaCl, 0.05% Sodium Azide and 40% glycerol

Research Areas: Signal Transduction, Cancer, Neuroscience

Storage & Shipping: Store at -20°C. Avoid repeated freezing and thawing



Immunohistochemistry analysis of paraffin embedded Human tonsil tissue using 218933(NID2 Antibody) at a dilution of 1/70(Cytoplasm).



In comparison with the IHC on the left, the same paraffin-embedded Human tonsil tissue is first treated with the fusion protein and then with 218933(Anti-NID2 Antibody) at dilution 1/70.