

NIEMANN PICK C2 RABBIT MAB

Cat.#: N263453

Product Name: Anti-Niemann Pick C2 Rabbit Monoclonal Antibody

Synonyms: HE1; EDDMI

UNIPROT ID: P61916

Background: This gene encodes a protein containing a lipid recognition domain. The encoded protein may function in regulating the transport of cholesterol through the late endosomal/lysosomal system. Mutations in this gene have been associated with Niemann-Pick disease, type C2 and frontal lobe atrophy. [provided by RefSeq, Jul 2008]

Immunogen: Recombinant protein of human Niemann Pick C2

Applications: WB,IHC-F,IHC-P,ICC/IF

Recommended Dilutions: WB: 1/500-1/1000 IHC: 1/50-1/100 IF: 1/50-1/200

Host Species: Rabbit

Clonality: Rabbit Monoclonal

Clone ID: R07-0C8

MW: Calculated MW: 17 kDa; Observed MW: 17 kDa

Isotype: IgG

Purification: Affinity Purified

Species Reactivity: Human,Mouse,Rat

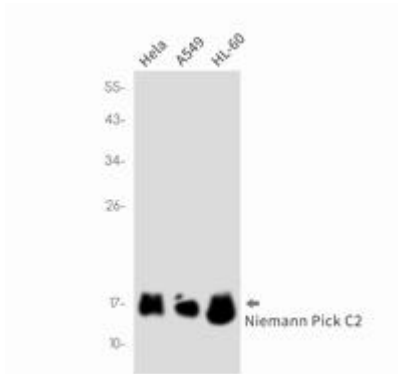
Conjugation: Unconjugated

Modification: Unmodified

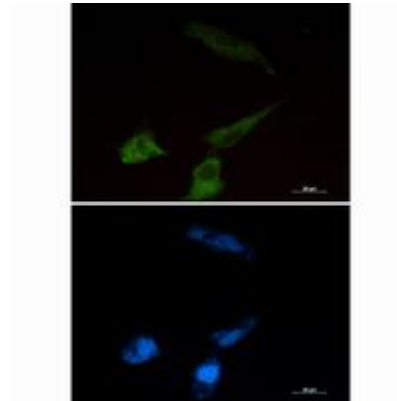
Constituents: PBS (without Mg²⁺ and Ca²⁺), pH 7.3 containing 50% glycerol, 0.5% BSA and 0.02% sodium azide

Research Areas: Cardiovascular

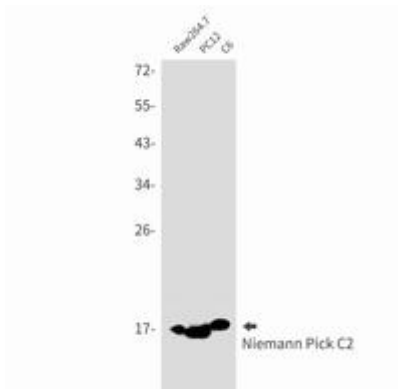
Storage & Shipping: Store at -20°C. Avoid repeated freezing and thawing



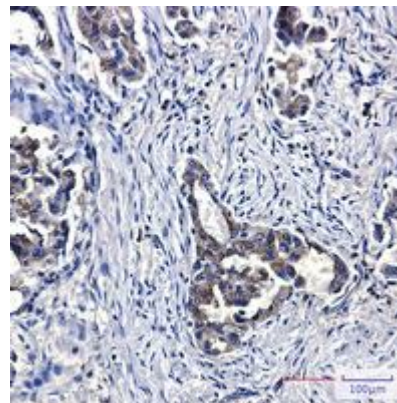
Western blot analysis of Niemann Pick C2 in HeLa, A549, HL-60 lysates using Niemann Pick C2 antibody



Immunocytochemistry analysis of Niemann Pick C2 (green) in U87-MG using Niemann Pick C2 antibody, and DAPI (blue).



Western blot analysis of Niemann Pick C2 in Raw264.7, PC-12, C6 lysates using Niemann Pick C2 antibody.



Immunohistochemistry analysis of paraffin-embedded Human lung cancer using Niemann Pick C2 antibody. High-pressure and temperature Sodium Citrate pH 6.0 was used for antigen retrieval.