

## NIF3L1 RABBIT PAB

**Cat.#:** S216991

**Product Name:** Anti-NIF3L1 Rabbit Polyclonal Antibody

**Synonyms:** CALS-7; MDS015; ALS2CR1

**UNIPROT ID:** Q9GZT8 (Gene Accession - BC007654 )

**Background:** May function as a transcriptional corepressor through its interaction with COPS2, negatively regulating the expression of genes involved in neuronal differentiation.

**Immunogen:** Fusion protein of human NIF3L1

**Applications:** ELISA, WB, IHC

**Recommended Dilutions:** IHC: 25-100;WB: 200-1000;ELISA: 2000-5000

**Host Species:** Rabbit

**Clonality:** Rabbit Polyclonal

**Isotype:** Immunogen-specific rabbit IgG

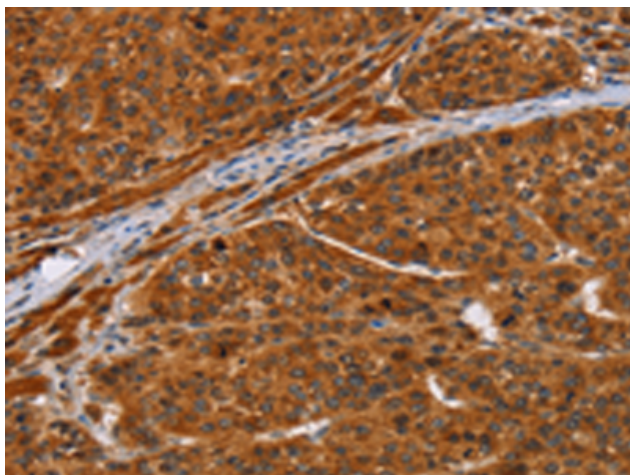
**Purification:** Antigen affinity purification

**Species Reactivity:** Human, Mouse, Rat

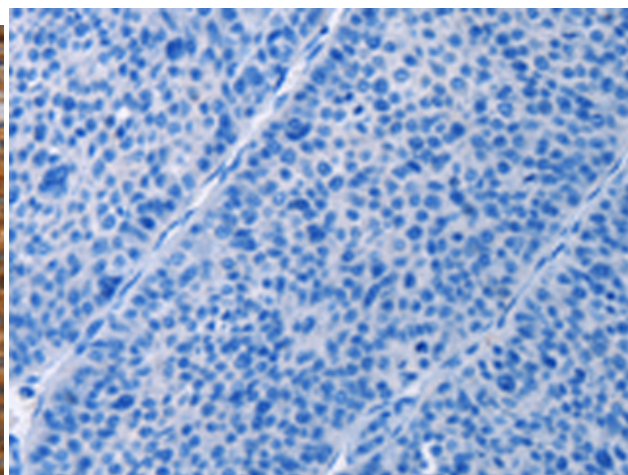
**Constituents:** PBS (without Mg<sup>2+</sup> and Ca<sup>2+</sup>), pH 7.4, 150 mM NaCl, 0.05% Sodium Azide and 40% glycerol

**Research Areas:** Neuroscience

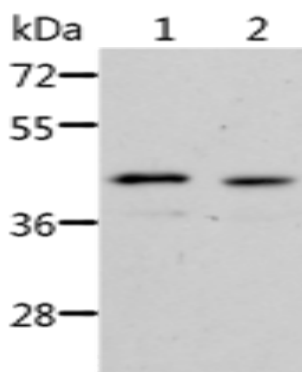
**Storage & Shipping:** Store at -20°C. Avoid repeated freezing and thawing



Immunohistochemistry analysis of paraffin embedded Human liver cancer tissue using 216991(NIF3L1 Antibody) at a dilution of 1/20(Cytoplasm).



In comparison with the IHC on the left, the same paraffin-embedded Human liver cancer tissue is first treated with the fusion protein and then with 216991(Anti-NIF3L1 Antibody) at dilution 1/20.



Gel: 10%SDS-PAGE, Lysate: 40 µg;  
Lane 1-2: Jurkat cells, human fetal kidney tissue;  
Primary antibody: 216991(NIF3L1 Antibody) at dilution 1/500;  
Secondary antibody: Goat anti rabbit IgG at 1/8000 dilution;  
Exposure time: 2 minutes