

NIP7 RABBIT PAB

Cat.#: S218993

Product Name: Anti-NIP7 Rabbit Polyclonal Antibody

Synonyms: KD93; CGI-37; HSPC031

UNIPROT ID: Q9Y221 (Gene Accession - BC015941)

Background: Required for proper 34S pre-rRNA processing and 60S ribosome subunit assembly.

Immunogen: Fusion protein of human NIP7

Applications: ELISA, IHC

Recommended Dilutions: IHC: 30-150; ELISA: 5000-10000

Host Species: Rabbit

Clonality: Rabbit Polyclonal

Isotype: Immunogen-specific rabbit IgG

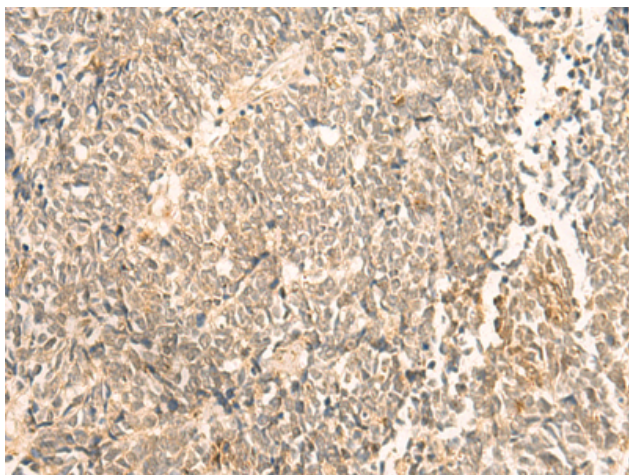
Purification: Antigen affinity purification

Species Reactivity: Human, Mouse, Rat

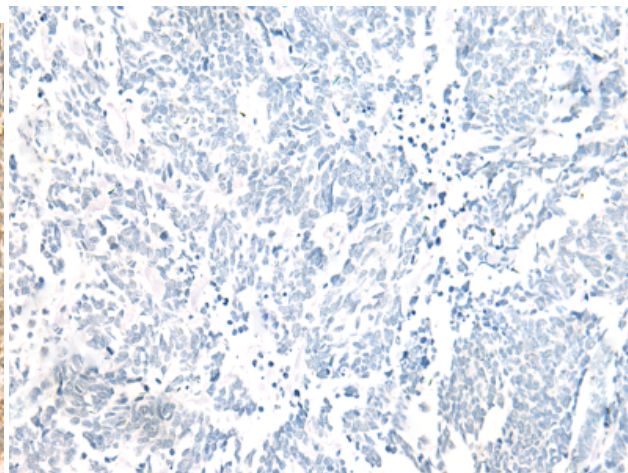
Constituents: PBS (without Mg²⁺ and Ca²⁺), pH 7.4, 150 mM NaCl, 0.05% Sodium Azide and 40% glycerol

Research Areas: Epigenetics and Nuclear Signaling, Stem Cells

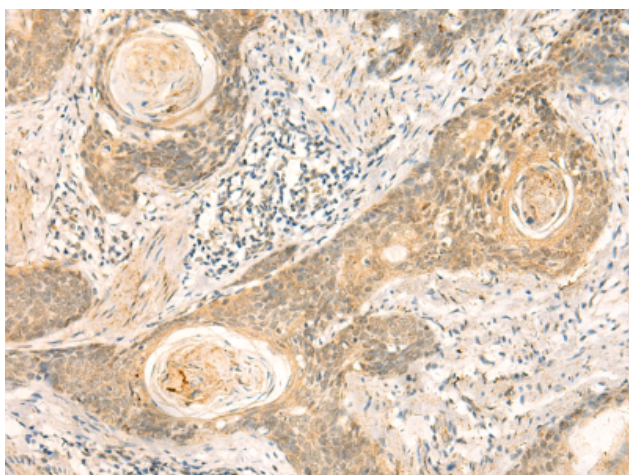
Storage & Shipping: Store at -20°C. Avoid repeated freezing and thawing



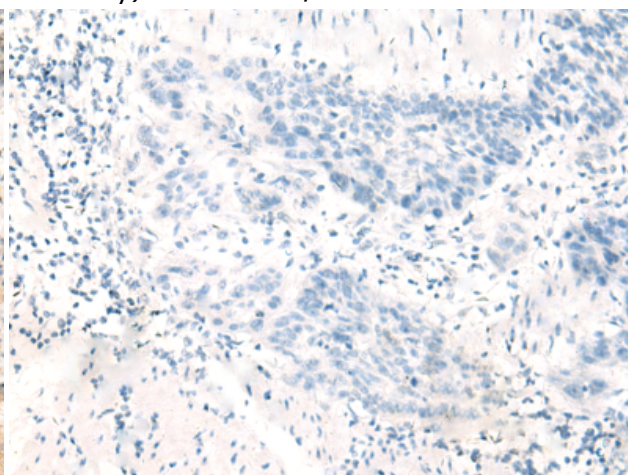
Immunohistochemistry analysis of paraffin embedded Human lung cancer tissue using 218993(NIP7 Antibody) at a dilution of 1/50(Nucleus).



In comparison with the IHC on the left, the same paraffin-embedded Human lung cancer tissue is first treated with the fusion protein and then with 218993(Anti-NIP7 Antibody) at dilution 1/50.



The image on the left is immunohistochemistry of paraffin-embedded Human esophagus cancer tissue using 218993(Anti-NIP7 Antibody) at a dilution of 1/50.



In comparison with the IHC on the left, the same paraffin-embedded Human esophagus cancer tissue is first treated with fusion protein and then with D225616(Anti-NIP7 Antibody) at dilution 1/50.