

NIPA1 RABBIT PAB

Cat.#: S218216

Product Name: Anti-NIPA1 Rabbit Polyclonal Antibody

Synonyms: FSP3; SPG6

UNIPROT ID: Q7RTP0 (Gene Accession - BC025678)

Background: This gene encodes a magnesium transporter that associates with early endosomes and the cell surface in a variety of neuronal and epithelial cells. This protein may play a role in nervous system development and maintenance. Multiple transcript variants encoding different isoforms have been found for this gene. Mutations in this gene have been associated with autosomal dominant spastic paraplegia 6.

Immunogen: Full length fusion protein

Applications: ELISA, IHC

Recommended Dilutions: IHC: 25-100; ELISA: 5000-10000

Host Species: Rabbit

Clonality: Rabbit Polyclonal

Isotype: Immunogen-specific rabbit IgG

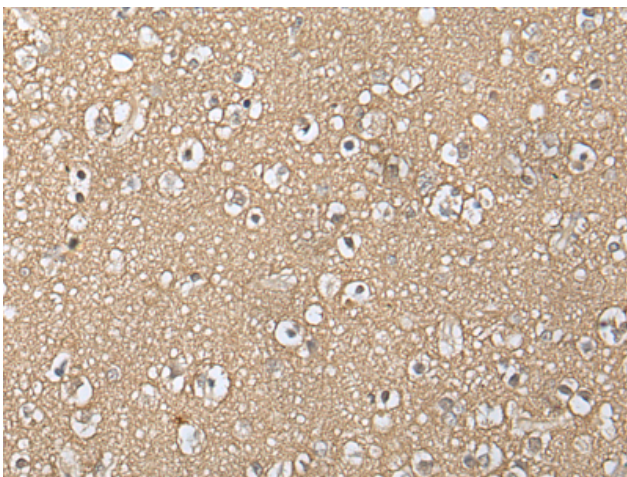
Purification: Antigen affinity purification

Species Reactivity: Human, Mouse

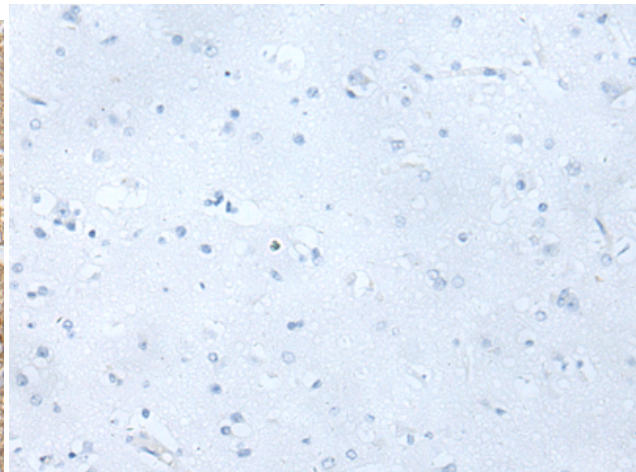
Constituents: PBS (without Mg²⁺ and Ca²⁺), pH 7.4, 150 mM NaCl, 0.05% Sodium Azide and 40% glycerol

Research Areas: Metabolism, Signal Transduction

Storage & Shipping: Store at -20°C. Avoid repeated freezing and thawing



Immunohistochemistry analysis of paraffin embedded Human brain tissue using 218216(NIPA1 Antibody) at a dilution of 1/30(Cell membrane).



In comparison with the IHC on the left, the same paraffin-embedded Human brain tissue is first treated with the fusion protein and then with 218216(Anti-NIPA1 Antibody) at dilution 1/30.