

NIPBL RABBIT PAB

Cat.#: S218987

Product Name: Anti-NIPBL Rabbit Polyclonal Antibody

Synonyms: CDLS; IDN3; Scc2; CDLS1; IDN3-B

UNIPROT ID: Q6KC79 (Gene Accession - BC033847)

Background: This gene encodes the homolog of the *Drosophila melanogaster* Nipped-B gene product and fungal Scc2-type sister chromatid cohesion proteins. The *Drosophila* protein facilitates enhancer-promoter communication of remote enhancers and plays a role in developmental regulation. It is also homologous to a family of chromosomal adherins with broad roles in sister chromatid cohesion, chromosome condensation, and DNA repair. The human protein has a bipartite nuclear targeting sequence and a putative HEAT repeat. Condensins, cohesins and other complexes with chromosome-related functions also contain HEAT repeats. Mutations in this gene result in Cornelia de Lange syndrome, a disorder characterized by dysmorphic facial features, growth delay, limb reduction defects, and cognitive disability. Two transcript variants encoding different isoforms have been found for this gene.

Immunogen: Fusion protein of human NIPBL

Applications: ELISA, IHC

Recommended Dilutions: IHC: 50-200; ELISA: 5000-10000

Host Species: Rabbit

Clonality: Rabbit Polyclonal

Isotype: Immunogen-specific rabbit IgG

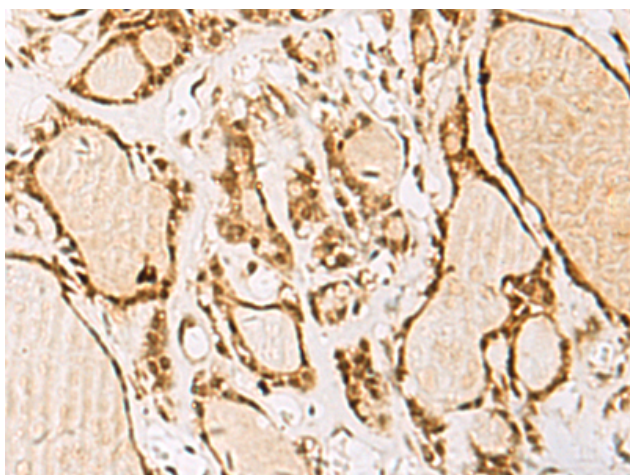
Purification: Antigen affinity purification

Species Reactivity: Human, Mouse

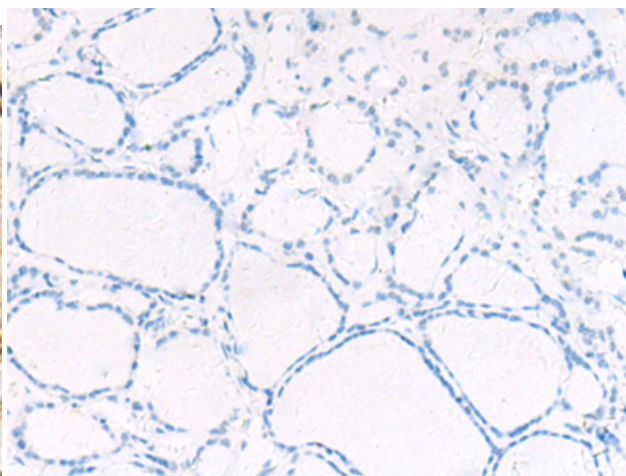
Constituents: PBS (without Mg²⁺ and Ca²⁺), pH 7.4, 150 mM NaCl, 0.05% Sodium Azide and 40% glycerol

Research Areas: Epigenetics and Nuclear Signaling

Storage & Shipping: Store at -20°C. Avoid repeated freezing and thawing



Immunohistochemistry analysis of paraffin embedded Human thyroid cancer tissue using 218987(NIPBL Antibody) at a dilution of 1/55(Nucleus).



In comparison with the IHC on the left, the same paraffin-embedded Human thyroid cancer tissue is first treated with the fusion protein and then with 218987(Anti-NIPBL Antibody) at dilution 1/55.



Product Description

Pioneering GTPase and Oncogene Product Development since 2010
