

## NLRP10 RABBIT PAB

**Cat.#:** S220751

**Product Name:** Anti-NLRP10 Rabbit Polyclonal Antibody

**Synonyms:** NOD8; PAN5; PYNOD; NALP10; CLR11.1

**UNIPROT ID:** Q86W26 (Gene Accession - NP\_789791 )

**Background:** Members of the NALP protein family typically contain a NACHT domain, a NACHT-associated domain (NAD), a C-terminal leucine-rich repeat (LRR) region, and an N-terminal pyrin domain (PYD). The protein encoded by this gene belongs to the NALP protein family despite lacking the LRR region. This protein likely plays a regulatory role in the innate immune system. The protein belongs to the signal-induced multiprotein complex, the inflammasome, that activates the pro-inflammatory caspases, caspase-1 and caspase-5. Other experiments indicate that this gene acts as a multifunctional negative regulator of inflammation and apoptosis.

**Immunogen:** Synthetic peptide of human NLRP10

**Applications:** ELISA, IHC

**Recommended Dilutions:** IHC: 50-200; ELISA: 2000-5000

**Host Species:** Rabbit

**Clonality:** Rabbit Polyclonal

**Isotype:** Immunogen-specific rabbit IgG

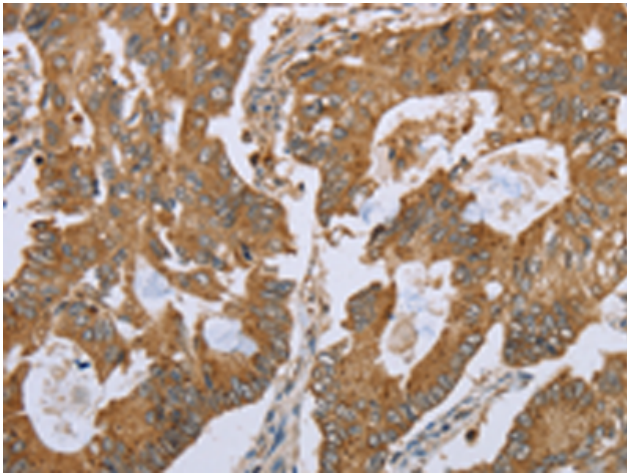
**Purification:** Antigen affinity purification

**Species Reactivity:** Human

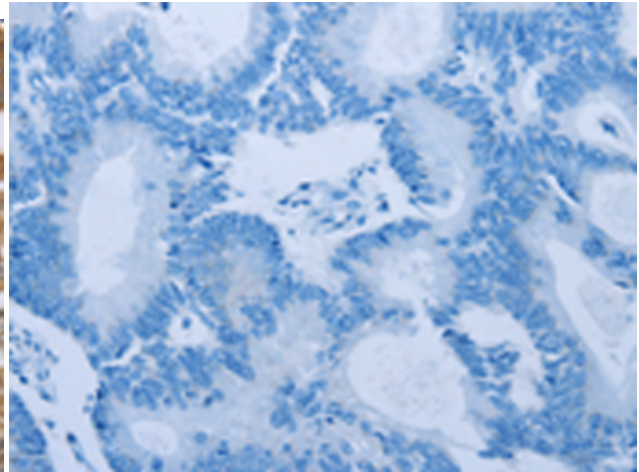
**Constituents:** PBS (without Mg<sup>2+</sup> and Ca<sup>2+</sup>), pH 7.4, 150 mM NaCl, 0.05% Sodium Azide and 40% glycerol

**Research Areas:** Cancer, Immunology

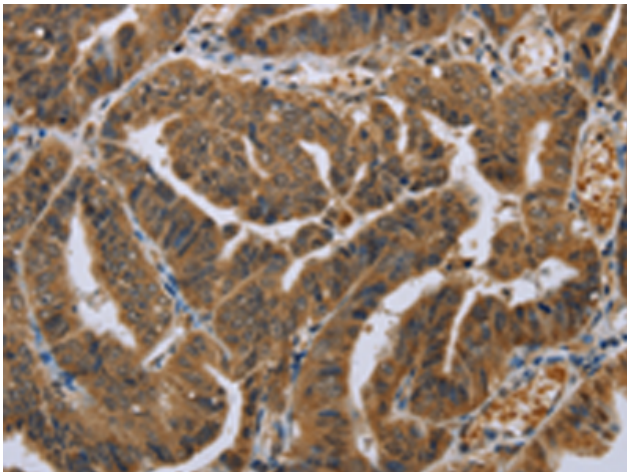
**Storage & Shipping:** Store at -20°C. Avoid repeated freezing and thawing



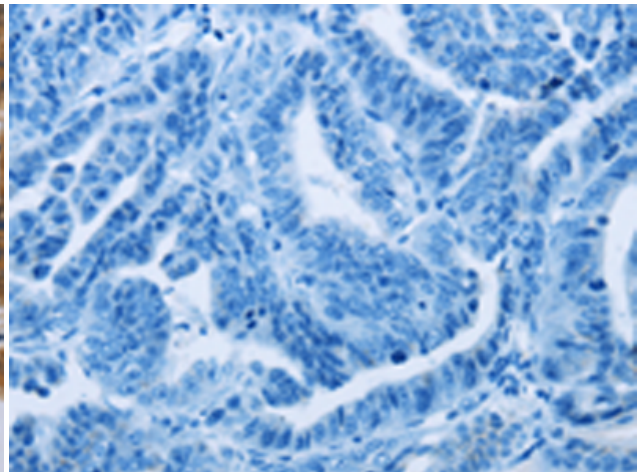
Immunohistochemistry analysis of paraffin embedded Human colon cancer tissue using 220751(NLRP10 Antibody) at a dilution of 1/45(Cytoplasm).



In comparison with the IHC on the left, the same paraffin-embedded Human colon cancer tissue is first treated with the synthetic peptide and then with 220751(Anti-NLRP10 Antibody) at dilution 1/45.



The image on the left is immunohistochemistry of paraffin-embedded Human gastric cancer tissue using 220751(Anti-NLRP10 Antibody) at a dilution of 1/45.



In comparison with the IHC on the left, the same paraffin-embedded Human gastric cancer tissue is first treated with synthetic peptide and then with D261961(Anti-NLRP10 Antibody) at dilution 1/45.