

NME2 RABBIT PAB

Cat.#: S221015

Product Name: Anti-NME2 Rabbit Polyclonal Antibody

Synonyms: PUF; NDKB; NDPKB; NM23B; NDPK-B; NM23-H2

UNIPROT ID: P22392 (Gene Accession - NP_002503)

Background: Nucleoside diphosphate kinase (NDK) exists as a hexamer composed of 'A' (encoded by NME1) and 'B' (encoded by this gene) isoforms. Multiple alternatively spliced transcript variants have been found for this gene. Read-through transcription from the neighboring upstream gene (NME1) generates naturally-occurring transcripts (NME1-NME2) that encode a fusion protein comprised of sequence sharing identity with each individual gene product.

Immunogen: Synthetic peptide of human NME2

Applications: ELISA, WB, IHC

Recommended Dilutions: IHC: 30-150;WB: 1000-5000;ELISA: 2000-10000

Host Species: Rabbit

Clonality: Rabbit Polyclonal

Isotype: Immunogen-specific rabbit IgG

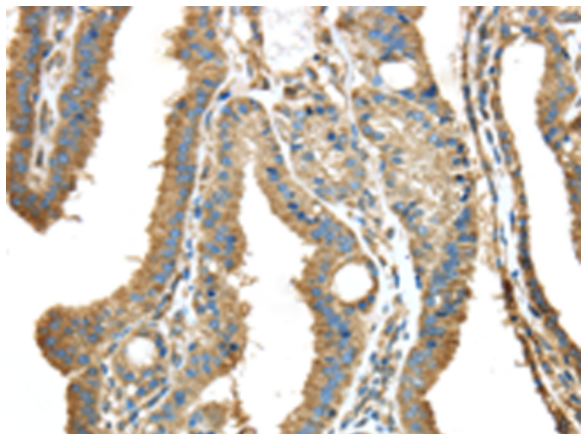
Purification: Antigen affinity purification

Species Reactivity: Human, Mouse, Rat

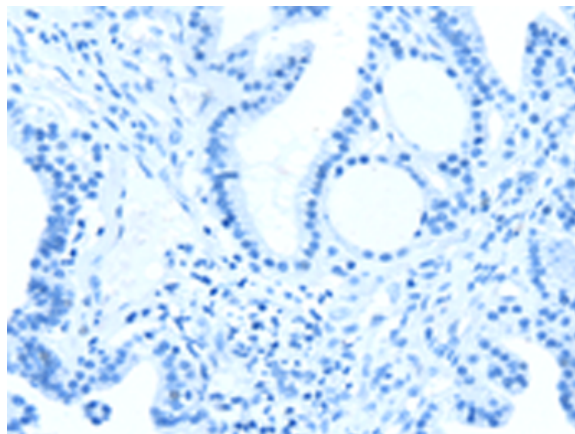
Constituents: PBS (without Mg²⁺ and Ca²⁺), pH 7.4, 150 mM NaCl, 0.05% Sodium Azide and 40% glycerol

Research Areas: Metabolism, Signal Transduction, Cancer, Neuroscience

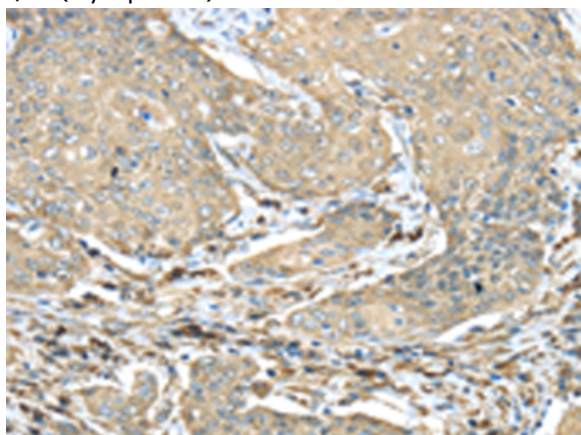
Storage & Shipping: Store at -20°C. Avoid repeated freezing and thawing



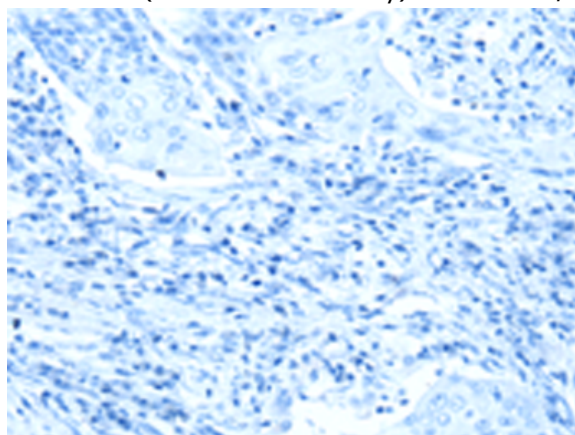
Immunohistochemistry analysis of paraffin embedded Human thyroid cancer tissue using 221015(NME2 Antibody) at a dilution of 1/40(Cytoplasm).



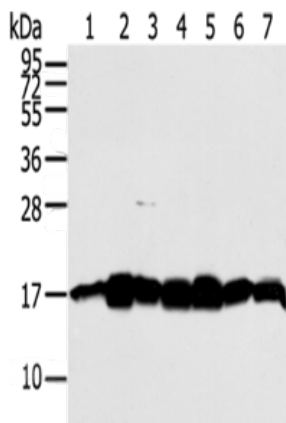
In comparison with the IHC on the left, the same paraffin-embedded Human thyroid cancer tissue is first treated with the synthetic peptide and then with 221015(Anti-NME2 Antibody) at dilution 1/40.



The image on the left is immunohistochemistry of paraffin-embedded Human cervical cancer tissue using 221015(Anti-NME2 Antibody) at a dilution of 1/40.



In comparison with the IHC on the left, the same paraffin-embedded Human cervical cancer tissue is first treated with synthetic peptide and then with D262361(Anti-NME2 Antibody) at dilution 1/40.



Gel: 12%SDS-PAGE, Lysate: 40 µg;
 Lane 1-7: Jurkat cells, A549 cells, Mouse brain tissue, 293T cells, LNCap cells, NIH/3T3 cells, Hela cells;
 Primary antibody: 221015(NME2 Antibody) at dilution 1/300;
 Secondary antibody: Goat anti rabbit IgG at 1/8000 dilution;
 Exposure time: 30 seconds



Product Description

Pioneering GTPase and Oncogene Product Development since 2010
