

NME3 RABBIT MAB

Cat.#: N263456

Product Name: Anti-NME3 Rabbit Monoclonal Antibody

Synonyms: NDPKC; NDPK-C; NM23H3; DR-nm23; NM23-H3; c371H6.2

UNIPROT ID: Q13232

Background: Major role in the synthesis of nucleoside triphosphates other than ATP

Immunogen: A synthetic peptide of human NME3

Applications: WB,IHC-P,IP

Recommended Dilutions: WB: 1/500-1/1000 IHC: 1/50-1/100 IP: 1/20

Host Species: Rabbit

Clonality: Rabbit Monoclonal

Clone ID: R03-3H6

MW: Calculated MW: 19 kDa; Observed MW: 19 kDa

Isotype: IgG

Purification: Affinity Purified

Species Reactivity: Human

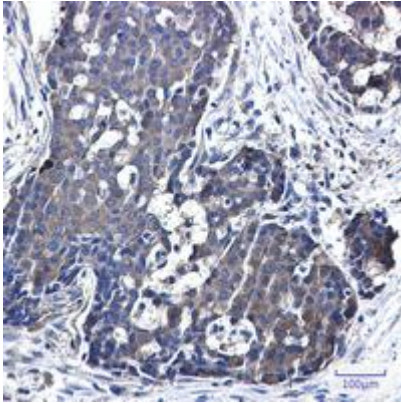
Conjugation: Unconjugated

Modification: Unmodified

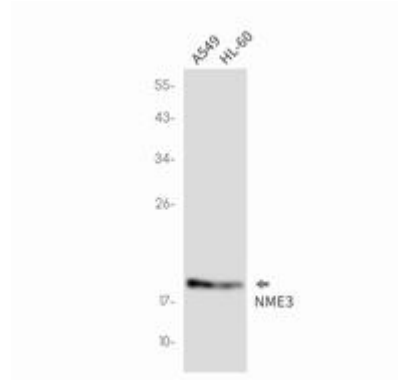
Constituents: PBS (without Mg²⁺ and Ca²⁺), pH 7.3 containing 50% glycerol, 0.5% BSA and 0.02% sodium azide

Research Areas: Signal Transduction

Storage & Shipping: Store at -20°C. Avoid repeated freezing and thawing



Immunohistochemistry analysis of paraffin-embedded Human breast cancer using NME3 antibody. High-pressure and temperature Sodium Citrate pH 6.0 was used for antigen retrieval.



Western blot analysis of NME3 in A549, HL-60 lysates using NME3 antibody.