

## NOP56 RABBIT PAB

**Cat.#:** N225080

**Product Name:** Anti-NOP56 Rabbit pAb

**Synonyms:** Nucleolar protein 56 (Nucleolar protein 5A)

**UNIPROT ID:** O00567

**Background:** Involved in the early to middle stages of 60S ribosomal subunit biogenesis.

**Immunogen:** Synthesized peptide derived from NOP56 at AA range: 191-240

**Applications:** WB,ELISA,IHC-P

**Recommended Dilutions:** WB: 1/500-1/1000 IHC: 1/50-1/100 ELISA: 1/10000

**Host Species:** Rabbit

**Clonality:** Rabbit Polyclonal

**Clone ID:** -

**MW:** Calculated MW: 66 kDa; Observed MW: 66 kDa

**Isotype:** IgG

**Purification:** Affinity Purified

**Species Reactivity:** Human,Mouse,Rat

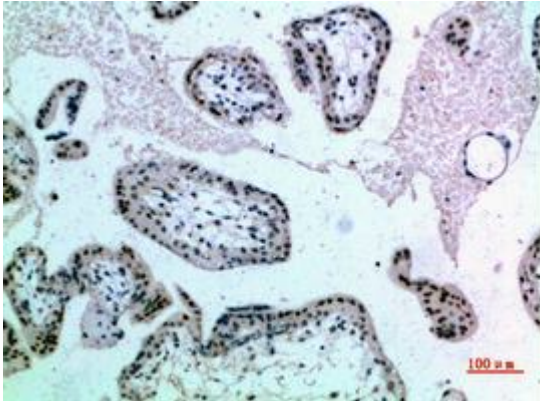
**Conjugation:** Unconjugated

**Modification:** Unmodified

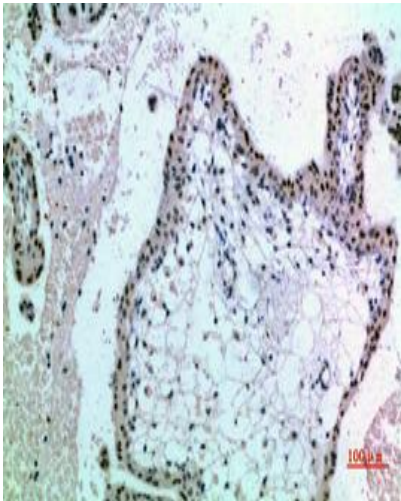
**Constituents:** PBS (without Mg<sup>2+</sup> and Ca<sup>2+</sup>), pH 7.3 containing 50% glycerol, 0.5% BSA and 0.02% sodium azide

**Research Areas:** Epigenetics and Nuclear Signaling

**Storage & Shipping:** Store at -20°C. Avoid repeated freezing and thawing



Immunohistochemistry analysis of paraffin-embedded Human placenta using NOP56 antibody. High-pressure and temperature Sodium Citrate pH 6.0 was used for antigen retrieval.



Immunohistochemistry analysis of paraffin-embedded Human placenta using NOP56 antibody. High-pressure and temperature Sodium Citrate pH 6.0 was used for antigen retrieval.



Western blot analysis of NOP56 in HEPG2 , HeLa lysates using NOP56 antibody.