

## NOP58 RABBIT PAB

**Cat.#:** S219494

**Product Name:** Anti-NOP58 Rabbit Polyclonal Antibody

**Synonyms:** NOP5; HSPC120; NOP5/NOP58

**UNIPROT ID:** Q9Y2X3 (Gene Accession - BC032592 )

**Background:** The protein encoded by this gene is a core component of box C/D small nucleolar ribonucleoproteins. Some box C/D small nucleolar RNAs (snRNAs), such as U3, U8, and U14, are dependent upon the encoded protein for their synthesis. This protein is SUMOylated, which is necessary for high affinity binding to snRNAs.

**Immunogen:** Fusion protein of human NOP58

**Applications:** ELISA, WB, IHC

**Recommended Dilutions:** IHC: 50-200;WB: 500-2000;ELISA: 5000-10000

**Host Species:** Rabbit

**Clonality:** Rabbit Polyclonal

**Isotype:** Immunogen-specific rabbit IgG

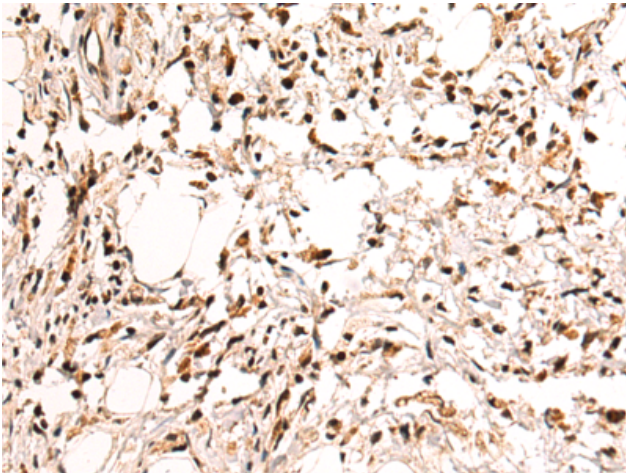
**Purification:** Antigen affinity purification

**Species Reactivity:** Human, Mouse, Rat

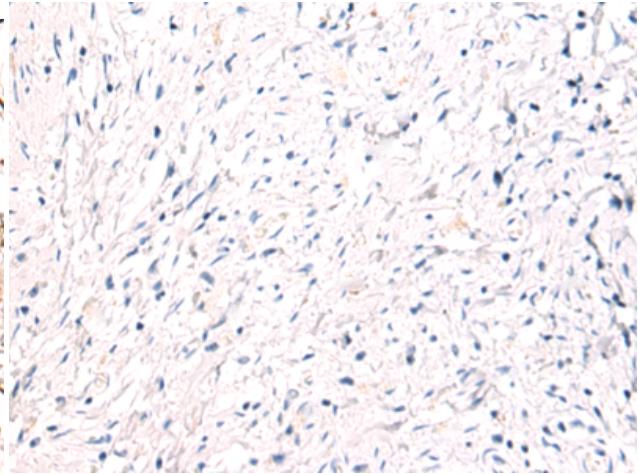
**Constituents:** PBS (without Mg<sup>2+</sup> and Ca<sup>2+</sup>), pH 7.4, 150 mM NaCl, 0.05% Sodium Azide and 40% glycerol

**Research Areas:** Epigenetics and Nuclear Signaling

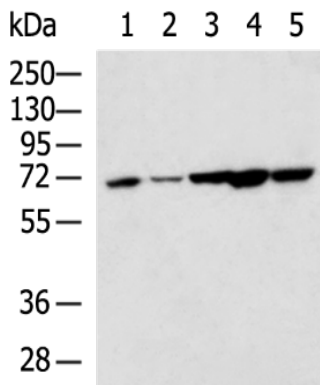
**Storage & Shipping:** Store at -20°C. Avoid repeated freezing and thawing



Immunohistochemistry analysis of paraffin embedded Human gastric cancer tissue using 219494(NOP58 Antibody) at a dilution of 1/85(Nucleus).



In comparison with the IHC on the left, the same paraffin-embedded Human gastric cancer tissue is first treated with the fusion protein and then with 219494(Anti-NOP58 Antibody) at dilution 1/85.



Gel: 8%SDS-PAGE, Lysate: 40 µg;  
 Lane 1-5: 293T, HepG2, HeLa, 231, K562 cell lysates;  
 Primary antibody: 219494(NOP58 Antibody) at dilution 1/600;  
 Secondary antibody: HRP-conjugated Goat anti rabbit IgG at 1/5000 dilution;  
 Exposure time: 1 second