

NOVA1 RABBIT MAB

Cat.#: N262620

Product Name: Anti-Nova1 Rabbit Monoclonal Antibody

Synonyms: Nova-1

UNIPROT ID: P51513

Background: May regulate RNA splicing or metabolism in a specific subset of developing neurons.

Immunogen: A synthetic peptide of human Nova1

Applications: WB,IHC-P

Recommended Dilutions: WB: 1/500-1/1000 IHC: 1/50-1/100

Host Species: Rabbit

Clonality: Rabbit Monoclonal

Clone ID: R06-8K6

MW: Calculated MW: 52 kDa; Observed MW: 52 kDa

Isotype: IgG

Purification: Affinity Purified

Species Reactivity: Human,Mouse,Rat

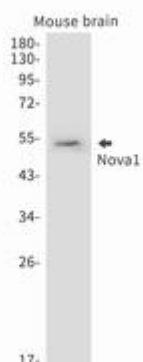
Conjugation: Unconjugated

Modification: Unmodified

Constituents: PBS (without Mg²⁺ and Ca²⁺), pH 7.3 containing 50% glycerol, 0.5% BSA and 0.02% sodium azide

Research Areas: Neuroscience

Storage & Shipping: Store at -20°C. Avoid repeated freezing and thawing



Western blot analysis of Nova1 in rat lung lysates using Nova1 antibody.