

NPL RABBIT PAB

Cat.#: S218149

Product Name: Anti-NPL Rabbit Polyclonal Antibody

Synonyms: NAL; C112; NPL1; Clorf13

UNIPROT ID: Q9BXD5 (Gene Accession - BC125051)

Background: This gene encodes a member of the N-acetylneuraminase lyase sub-family of (beta/alpha)(8)-barrel enzymes. N-acetylneuraminase lyases regulate cellular concentrations of N-acetylneuraminic acid (sialic acid) by mediating the reversible conversion of sialic acid into N-acetylmannosamine and pyruvate. A pseudogene of this gene is located on the short arm of chromosome 2. Alternatively spliced transcript variants encoding multiple isoforms have been observed for this gene.

Immunogen: Fusion protein of human NPL

Applications: ELISA, IHC

Recommended Dilutions: IHC: 25-100; ELISA: 5000-10000

Host Species: Rabbit

Clonality: Rabbit Polyclonal

Isotype: Immunogen-specific rabbit IgG

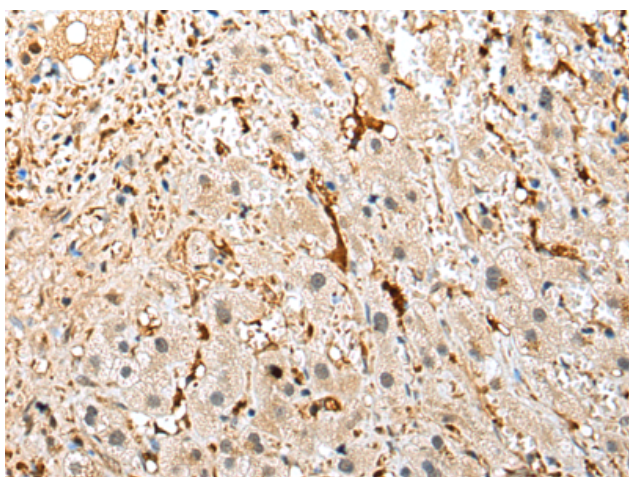
Purification: Antigen affinity purification

Species Reactivity: Human, Mouse, Rat

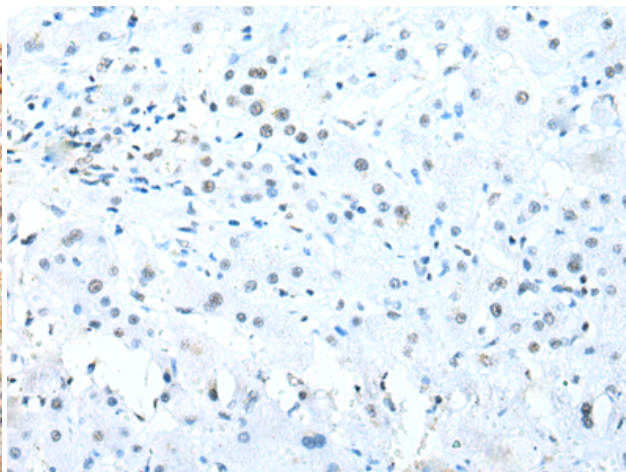
Constituents: PBS (without Mg²⁺ and Ca²⁺), pH 7.4, 150 mM NaCl, 0.05% Sodium Azide and 40% glycerol

Research Areas: Metabolism

Storage & Shipping: Store at -20°C. Avoid repeated freezing and thawing



Immunohistochemistry analysis of paraffin embedded Human liver cancer tissue using 218149(NPL Antibody) at a dilution of 1/25(Cytoplasm).



In comparison with the IHC on the left, the same paraffin-embedded Human liver cancer tissue is first treated with the fusion protein and then with 218149(Anti-NPL Antibody) at dilution 1/25.