

NPM3 RABBIT PAB

Cat.#: S211395

Product Name: Anti-NPM3 Rabbit Polyclonal Antibody

Synonyms: PORMIN; TMEM123

UNIPROT ID: O75607 (Gene Accession - BC054868)

Background: The protein encoded by this gene is related to the nuclear chaperone phosphoproteins, nucleoplasmin and nucleophosmin. This protein is strongly expressed in diverse cell types where it localizes primarily to the nucleus. Based on its similarity to nucleoplasmin and nucleophosmin, this protein likely functions as a molecular chaperone in the cell nucleus.

Immunogen: Fusion protein of human NPM3

Applications: ELISA, WB, IHC

Recommended Dilutions: IHC: 100-300;WB: 500-2000;ELISA: 2000-5000

Host Species: Rabbit

Clonality: Rabbit Polyclonal

Isotype: Immunogen-specific rabbit IgG

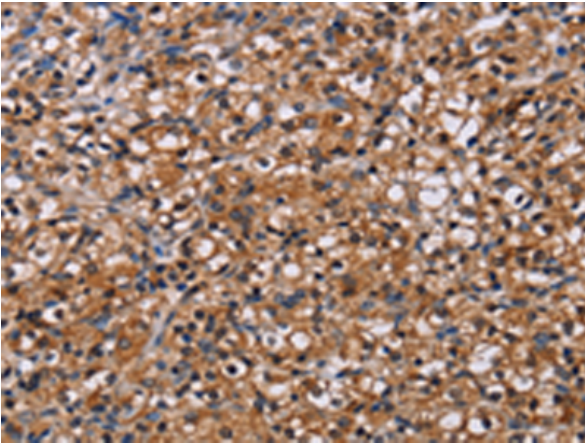
Purification: Antigen affinity purification

Species Reactivity: Human, Mouse

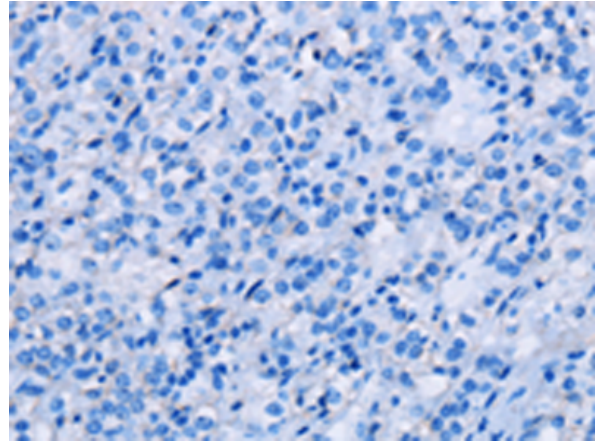
Constituents: PBS (without Mg²⁺ and Ca²⁺), pH 7.4, 150 mM NaCl, 0.05% Sodium Azide and 40% glycerol

Research Areas: Signal Transduction, Epigenetics and Nuclear Signaling

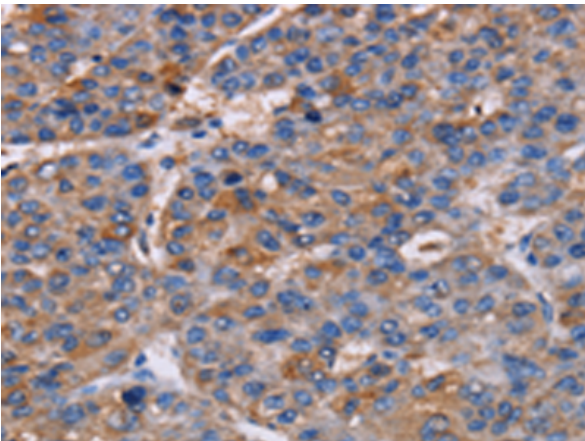
Storage & Shipping: Store at -20°C. Avoid repeated freezing and thawing



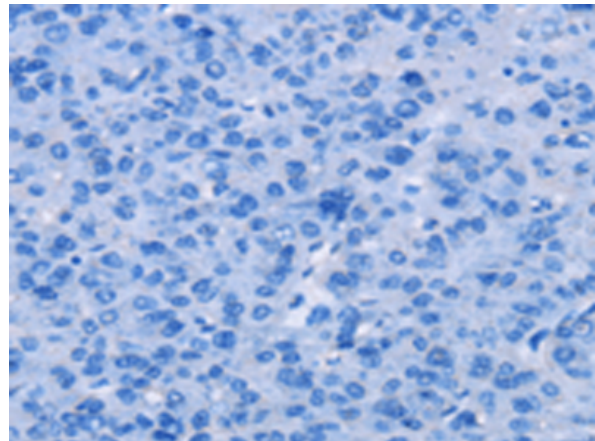
Immunohistochemistry analysis of paraffin embedded Human prostate cancer tissue using 211395(NPM3 Antibody) at a dilution of 1/60(Cytoplasm or Nucleus).



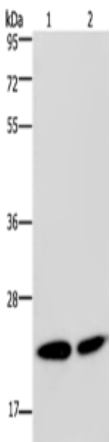
In comparison with the IHC on the left, the same paraffin-embedded Human prostate cancer tissue is first treated with the fusion protein and then with 211395(Anti-NPM3 Antibody) at dilution 1/60.



The image on the left is immunohistochemistry of paraffin-embedded Human liver cancer tissue using 211395(Anti-NPM3 Antibody) at a dilution of 1/60.



In comparison with the IHC on the left, the same paraffin-embedded Human liver cancer tissue is first treated with fusion protein and then with D122780(Anti-NPM3 Antibody) at dilution 1/60.



Gel: 8%SDS-PAGE, Lysate: 40 µg;
Lane 1-2: Hela cells, Jurkat cells;
Primary antibody: 211395(NPM3 Antibody) at dilution 1/300;
Secondary antibody: Goat anti rabbit IgG at 1/8000 dilution;
Exposure time: 10 seconds



Product Description

Pioneering GTPase and Oncogene Product Development since 2010
