

## NPPC RABBIT PAB

**Cat.#:** S220150

**Product Name:** Anti-NPPC Rabbit Polyclonal Antibody

**Synonyms:** CNP; CNP2

**UNIPROT ID:** P23582 (Gene Accession - NP\_077720 )

**Background:** This gene encodes a preproprotein that is proteolytically processed to generate multiple protein products. These products include the cardiac natriuretic peptides CNP-53, CNP-29 and CNP-22, which belong to the natriuretic family of peptides. The encoded peptides exhibit vasorelaxation activity in laboratory animals and elevated levels of CNP-22 have been observed in the plasma of chronic heart failure patients.

**Immunogen:** Synthetic peptide of human NPPC

**Applications:** ELISA, IHC

**Recommended Dilutions:** IHC: 50-200; ELISA: 2000-10000

**Host Species:** Rabbit

**Clonality:** Rabbit Polyclonal

**Isotype:** Immunogen-specific rabbit IgG

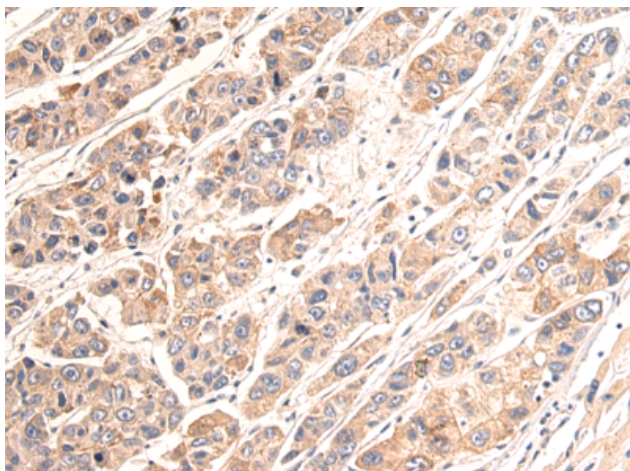
**Purification:** Antigen affinity purification

**Species Reactivity:** Human, Mouse, Rat

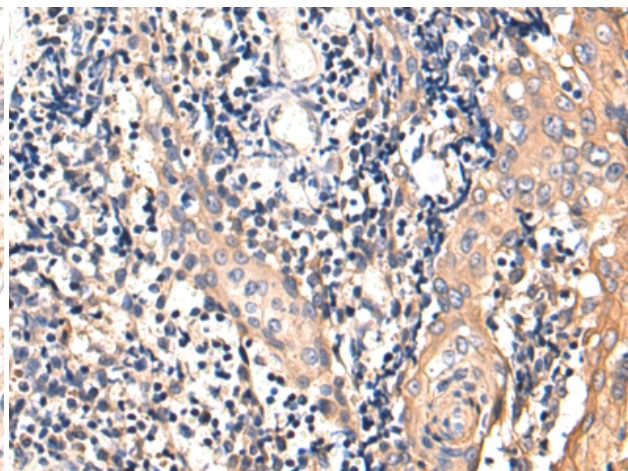
**Constituents:** PBS (without Mg<sup>2+</sup> and Ca<sup>2+</sup>), pH 7.4, 150 mM NaCl, 0.05% Sodium Azide and 40% glycerol

**Research Areas:** Signal Transduction, Cancer, Cardiovascular, Metabolism

**Storage & Shipping:** Store at -20°C. Avoid repeated freezing and thawing



Immunohistochemistry analysis of paraffin-embedded Human liver cancer tissue using 220150(NPPC Antibody) at a dilution of 1/70(Cytoplasm).



Immunohistochemistry analysis of paraffin-embedded Human tonsil tissue using 220150(Anti-NPPC Antibody) at a dilution of 1/70.