

NPY4R RABBIT PAB

Cat.#: S213912

Product Name: Anti-NPY4R Rabbit Polyclonal Antibody

Synonyms: Y4; PPI; PPYR1; NPY4-R

UNIPROT ID: P50391 (Gene Accession - NP_005963)

Background: NPY4-R is expressed in several human tissues, including brain, coronary artery, and ileum. NPY4-R maps to human chromosome 10q11.2. NPY4R belongs to the Neuropeptide Receptor GPCR Family and may regulate central nervous system, cardiovascular, and gastrointestinal function.

Immunogen: Synthetic peptide of human NPY4R

Applications: ELISA, IHC

Recommended Dilutions: IHC: 25-100; ELISA: 2000-5000

Host Species: Rabbit

Clonality: Rabbit Polyclonal

Isotype: Immunogen-specific rabbit IgG

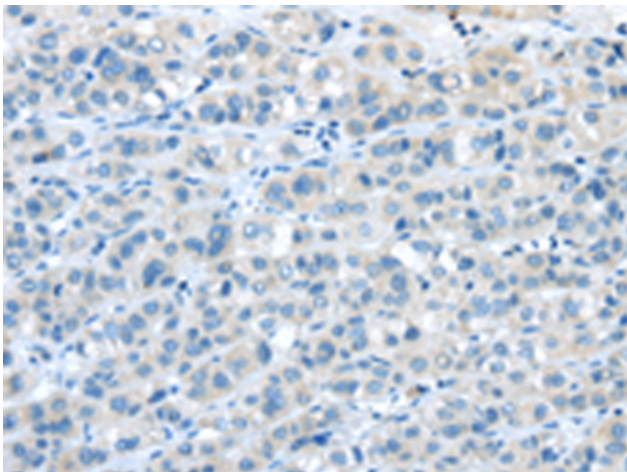
Purification: Antigen affinity purification

Species Reactivity: Human

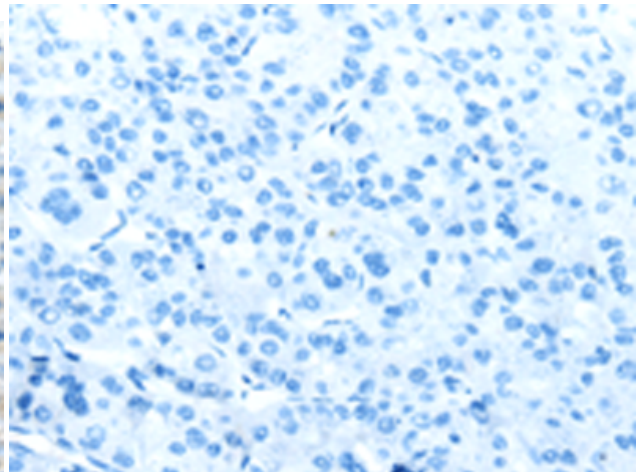
Constituents: PBS (without Mg²⁺ and Ca²⁺), pH 7.4, 150 mM NaCl, 0.05% Sodium Azide and 40% glycerol

Research Areas: Signal Transduction, Neuroscience

Storage & Shipping: Store at -20°C. Avoid repeated freezing and thawing



Immunohistochemistry analysis of paraffin embedded Human liver cancer tissue using 213912(NPY4R Antibody) at a dilution of 1/30(Cytoplasm and Cell membrane).



In comparison with the IHC on the left, the same paraffin-embedded Human liver cancer tissue is first treated with the synthetic peptide and then with 213912(Anti-NPY4R Antibody) at dilution 1/30.