

NQO1 RABBIT PAB

Cat.#: S220152

Product Name: Anti-NQO1 Rabbit Polyclonal Antibody

Synonyms: DTD; QR1; DHQU; DIA4; NMOR1; NMORI

UNIPROT ID: P15559 (Gene Accession - NP_000894)

Background: This gene is a member of the NAD(P)H dehydrogenase (quinone) family and encodes a cytoplasmic 2-electron reductase. This FAD-binding protein forms homodimers and reduces quinones to hydroquinones. This protein's enzymatic activity prevents the one electron reduction of quinones that results in the production of radical species. Mutations in this gene have been associated with tardive dyskinesia (TD), an increased risk of hematotoxicity after exposure to benzene, and susceptibility to various forms of cancer. Altered expression of this protein has been seen in many tumors and is also associated with Alzheimer's disease (AD). Alternate transcriptional splice variants, encoding different isoforms, have been characterized.

Immunogen: Synthetic peptide of human NQO1

Applications: ELISA, WB, IHC

Recommended Dilutions: IHC: 25-100;WB: 1000-5000;ELISA: 1000-5000

Host Species: Rabbit

Clonality: Rabbit Polyclonal

Isotype: Immunogen-specific rabbit IgG

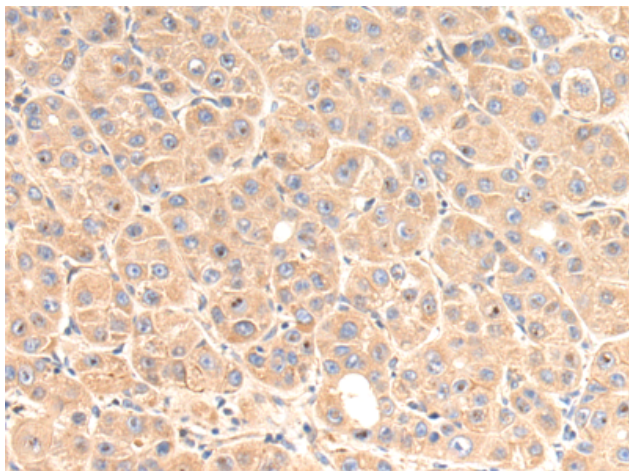
Purification: Antigen affinity purification

Species Reactivity: Human, Mouse, Rat

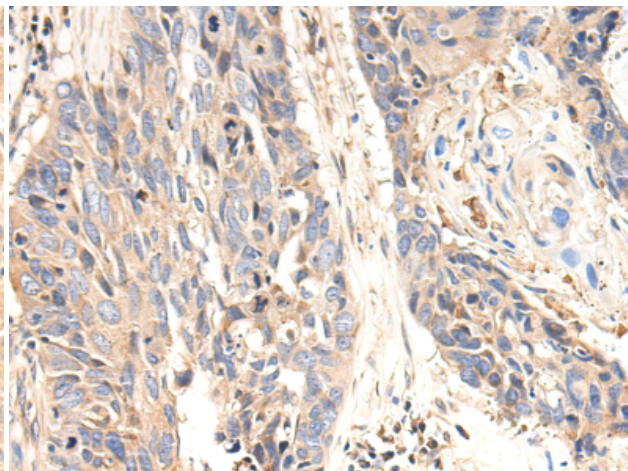
Constituents: PBS (without Mg²⁺ and Ca²⁺), pH 7.4, 150 mM NaCl, 0.05% Sodium Azide and 40% glycerol

Research Areas: Metabolism

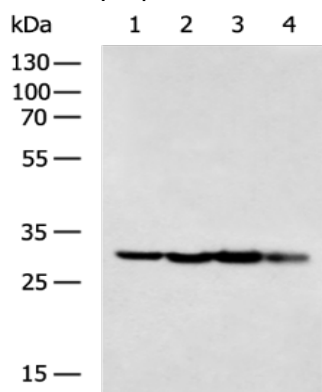
Storage & Shipping: Store at -20°C. Avoid repeated freezing and thawing



Immunohistochemistry analysis of paraffin-embedded Human liver cancer tissue using 220152(NQO1 Antibody) at a dilution of 1/25(Cytoplasm).



Immunohistochemistry analysis of paraffin-embedded Human lung cancer tissue using 220152(Anti-NQO1 Antibody) at a dilution of 1/25.



Gel: 8%SDS-PAGE, Lysate: 40 μ g;
Lane 1-4: HeLa, MCF7, A549, HepG2 cell lysates;
Primary antibody: 220152(NQO1 Antibody) at dilution 1/600;
Secondary antibody: HRP-conjugated Goat anti rabbit IgG at 1/5000 dilution;
Exposure time: 1 second