

## NR1D1 RABBIT MAB

**Cat.#:** N262622

**Product Name:** Anti-NR1D1 Rabbit Monoclonal Antibody

**Synonyms:** NR1D1; EAR1; HREV; THRAL; Nuclear receptor subfamily 1 group D member 1; Rev-erbA-alpha; V-erbA-related protein 1; EAR-1

**UNIPROT ID:** P20393

**Background:** Functions as a constitutive transcriptional repressor. Possible receptor for triiodothyronine.

**Immunogen:** A synthetic peptide of human NR1D1

**Applications:** WB,ICC/IF

**Recommended Dilutions:** WB: 1/500-1/1000 IF: 1/50-1/200

**Host Species:** Rabbit

**Clonality:** Rabbit Monoclonal

**Clone ID:** R05-8B1

**MW:** Calculated MW: 67 kDa; Observed MW: 67 kDa

**Isotype:** IgG

**Purification:** Affinity Purified

**Species Reactivity:** Human,Mouse,Rat

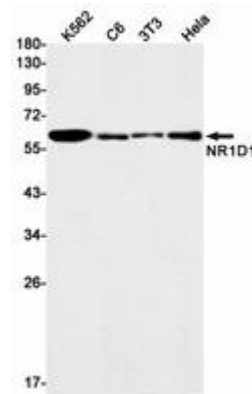
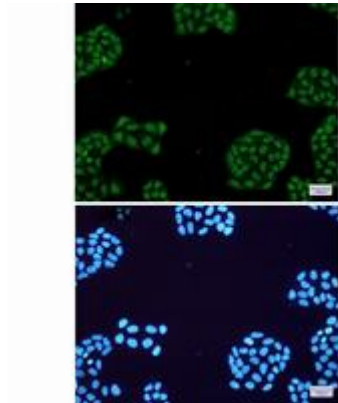
**Conjugation:** Unconjugated

**Modification:** Unmodified

**Constituents:** PBS (without Mg<sup>2+</sup> and Ca<sup>2+</sup>), pH 7.3 containing 50% glycerol, 0.5% BSA and 0.02% sodium azide

**Research Areas:** Signal Transduction

**Storage & Shipping:** Store at -20°C. Avoid repeated freezing and thawing



Western blot analysis of NR1D1 in K562, C6, 3T3, HeLa lysates using NR1D1 antibody.