

## NR2E1 RABBIT PAB

**Cat.#:** S219369

**Product Name:** Anti-NR2E1 Rabbit Polyclonal Antibody

**Synonyms:** TLL; TLX; XTLL

**UNIPROT ID:** Q9Y466 (Gene Accession - BC028031)

**Background:** The protein encoded by this gene is an orphan receptor involved in retinal development. The encoded protein also regulates adult neural stem cell proliferation and may be involved in control of aggressive behavior. Two transcript variants encoding different isoforms have been found for this gene. [provided by RefSeq, Aug 2015]

**Immunogen:** Fusion protein of human NR2E1

**Applications:** ELISA, WB, IHC

**Recommended Dilutions:** IHC: 100-300;WB: 1000-5000;ELISA: 5000-10000

**Host Species:** Rabbit

**Clonality:** Rabbit Polyclonal

**Isotype:** Immunogen-specific rabbit IgG

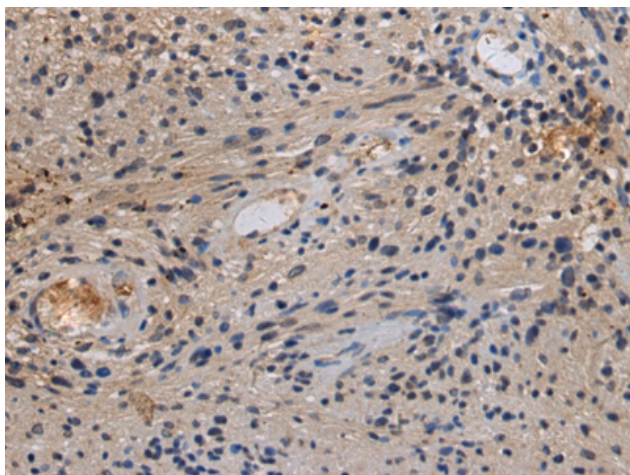
**Purification:** Antigen affinity purification

**Species Reactivity:** Human, Mouse

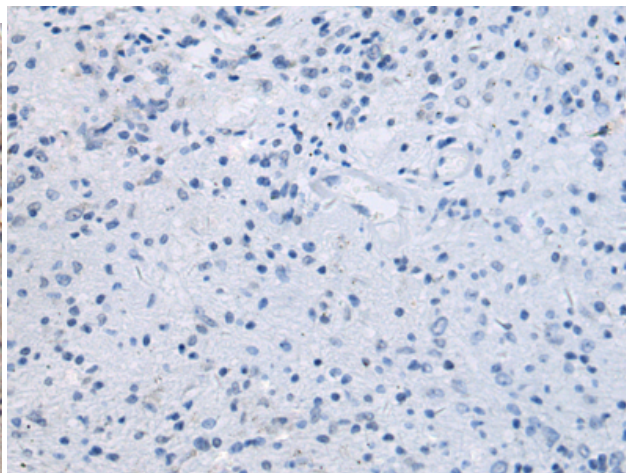
**Constituents:** PBS (without Mg<sup>2+</sup> and Ca<sup>2+</sup>), pH 7.4, 150 mM NaCl, 0.05% Sodium Azide and 40% glycerol

**Research Areas:** Signal Transduction, Epigenetics and Nuclear Signaling, Neuroscience, Stem Cells

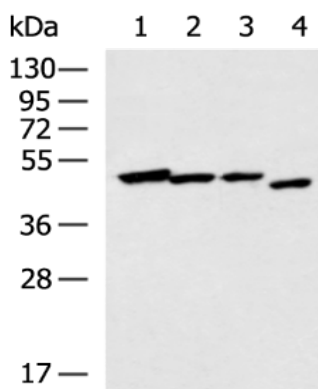
**Storage & Shipping:** Store at -20°C. Avoid repeated freezing and thawing



Immunohistochemistry analysis of paraffin embedded Human brain tissue using 219369(NR2E1 Antibody) at a dilution of 1/160(Cytoplasm).



In comparison with the IHC on the left, the same paraffin-embedded Human brain tissue is first treated with the fusion protein and then with 219369(Anti-NR2E1 Antibody) at dilution 1/160.



Gel: 8%SDS-PAGE, Lysate: 40 µg;  
 Lane 1-4: Human cerebrum tissue, A172 cell,  
 Mouse brain tissue, NIH/3T3 cell lysates;  
 Primary antibody: 219369(NR2E1 Antibody) at  
 dilution 1/1000;  
 Secondary antibody: HRP-conjugated Goat  
 anti rabbit IgG at 1/5000 dilution;  
 Exposure time: 1 minute