

## NRG3 RABBIT PAB

**Cat.#:** S214109

**Product Name:** Anti-NRG3 Rabbit Polyclonal Antibody

**Synonyms:** HRG3; pro-NRG3

**UNIPROT ID:** P56975 (Gene Accession - NP\_001010848 )

**Background:** This gene is a member of the neuregulin gene family. This gene family encodes ligands for the transmembrane tyrosine kinase receptors ERBB3 and ERBB4 - members of the epidermal growth factor receptor family. Ligand binding activates intracellular signaling cascades and the induction of cellular responses including proliferation, migration, differentiation, and survival or apoptosis. This gene encodes neuregulin 3 (NRG3). NRG3 has been shown to activate the tyrosine phosphorylation of its cognate receptor, ERBB4, and is thought to influence neuroblast proliferation, migration and differentiation by signalling through ERBB4.

**Immunogen:** Synthetic peptide of human NRG3

**Applications:** ELISA, WB, IHC

**Recommended Dilutions:** IHC: 50-200;WB: 200-1000;ELISA: 1000-2000

**Host Species:** Rabbit

**Clonality:** Rabbit Polyclonal

**Isotype:** Immunogen-specific rabbit IgG

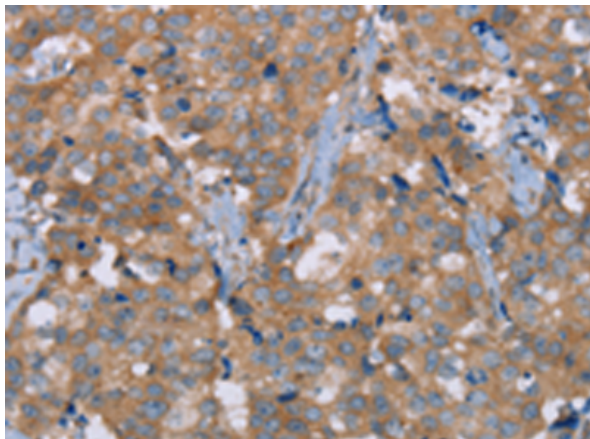
**Purification:** Antigen affinity purification

**Species Reactivity:** Human, Mouse

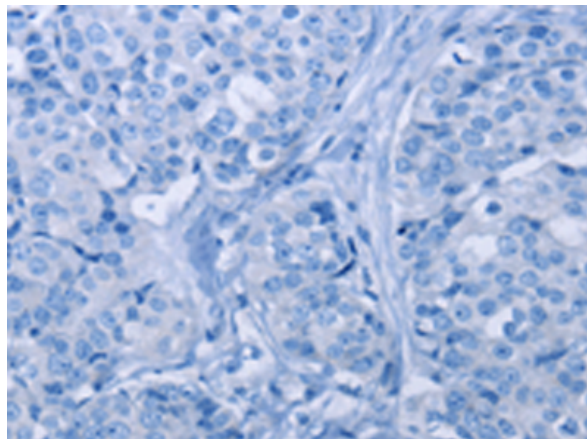
**Constituents:** PBS (without Mg<sup>2+</sup> and Ca<sup>2+</sup>), pH 7.4, 150 mM NaCl, 0.05% Sodium Azide and 40% glycerol

**Research Areas:** Neuroscience

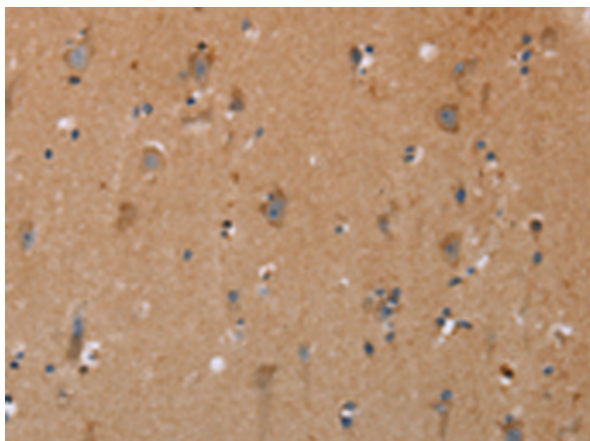
**Storage & Shipping:** Store at -20°C. Avoid repeated freezing and thawing



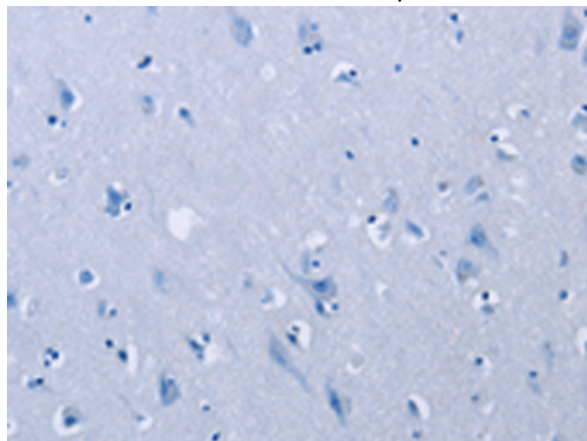
Immunohistochemistry analysis of paraffin embedded Human breast cancer tissue using 214109(NRG3 Antibody) at a dilution of 1/30(Cytoplasm).



In comparison with the IHC on the left, the same paraffin-embedded Human breast cancer tissue is first treated with the synthetic peptide and then with 214109(Anti-NRG3 Antibody) at dilution 1/30.



The image on the left is immunohistochemistry of paraffin-embedded Human brain tissue using 214109(Anti-NRG3 Antibody) at a dilution of 1/30.



In comparison with the IHC on the left, the same paraffin-embedded Human brain tissue is first treated with synthetic peptide and then with D161360(Anti-NRG3 Antibody) at dilution 1/30.



Gel: 6%SDS-PAGE, Lysate: 40 µg;  
Lane: Human fetal brain tissue;  
Primary antibody: 214109(NRG3 Antibody) at dilution 1/200;  
Secondary antibody: Goat anti rabbit IgG at 1/8000 dilution;  
Exposure time: 2 minutes



# Product Description

Pioneering GTPase and Oncogene Product Development since 2010

---