

NSE (1G7) MOUSE MAB

Cat.#: N261461

Product Name: Anti-NSE (1G7) Mouse Monoclonal Antibody

Synonyms: ENO2; Gamma-enolase; 2-phospho-D-glycerate hydro-lyase; Enolase 2; Neural enolase; Neuron-specific enolase; NSE

UNIPROT ID: P09104

Background: ENO2 an enzyme with 2-phospho-D-glycerate hydro-lyase activity. One of the three enolase isoenzymes found in mammals. This isoenzyme, a homodimer, is found in mature neurons and cells of neuronal origin. A switch from alpha enolase to gamma enolase occurs in neural tissue during development in rats and primates.

Immunogen: Synthetic peptide derived from human NSE.

Applications: WB,ELISA

Recommended Dilutions: WB: 1/500-1/1000 ELISA: 1/10000

Host Species: Mouse

Clonality: Mouse Monoclonal

Clone ID: 1G7-B4

MW: Calculated MW: 47 kDa; Observed MW: 47 kDa

Isotype: IgG1

Purification: Affinity Purified

Species Reactivity: Human,Mouse,Rat

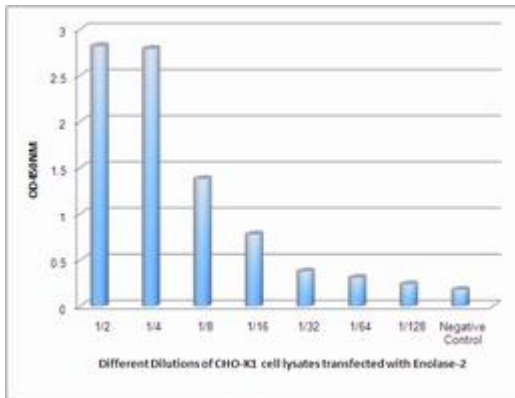
Conjugation: Unconjugated

Modification: Unmodified

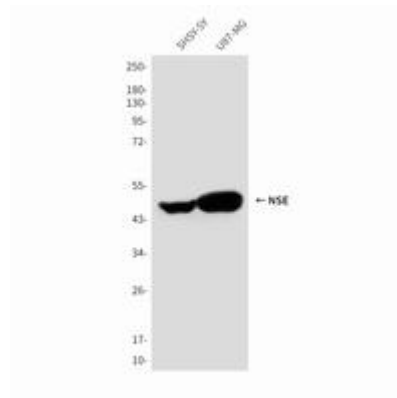
Constituents: PBS (without Mg²⁺ and Ca²⁺), pH 7.3 containing 50% glycerol, 0.5% BSA and 0.02% sodium azide

Research Areas: Signal Transduction

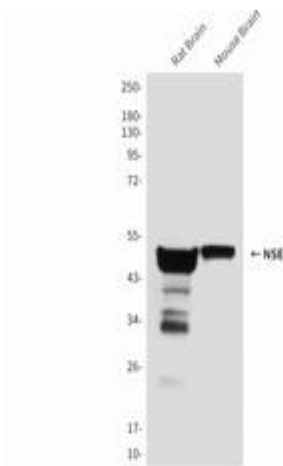
Storage & Shipping: Store at -20°C. Avoid repeated freezing and thawing



Observed Enolase2 levels in CHO-K1 cell lysates transfected with Enolase2 at different dilution.



Western blot analysis of Enolase2 in SH-SY5Y and U87-MG lysates using Enolase2 antibody.



Western blot analysis of NSE (1G7) in rat Brain and mouse Brain lysates using Enolase2 antibody.