

NSE (4C7) MOUSE MAB

Cat.#: N261224

Product Name: Anti-NSE (4C7) Mouse Monoclonal Antibody

Synonyms: ENO2; Gamma-enolase; 2-phospho-D-glycerate hydro-lyase; Enolase 2; Neural enolase; Neuron-specific enolase; NSE

UNIPROT ID: P09104

Background: ENO2 an enzyme with 2-phospho-D-glycerate hydro-lyase activity. One of the three enolase isoenzymes found in mammals. This isoenzyme, a homodimer, is found in mature neurons and cells of neuronal origin. A switch from alpha enolase to gamma enolase occurs in neural tissue during development in rats and primates.

Immunogen: Synthetic Peptide of NSE

Applications: WB,IHC-F,IHC-P,ICC/IF

Recommended Dilutions: WB: 1/500-1/1000 IHC: 1/50-1/100 IF: 1/50-1/200

Host Species: Mouse

Clonality: Mouse Monoclonal

Clone ID: 4C7-4F10-10F9

MW: Calculated MW: 47 kDa; Observed MW: 47 kDa

Isotype: IgG1

Purification: Affinity Purified

Species Reactivity: Human,Mouse,Rat

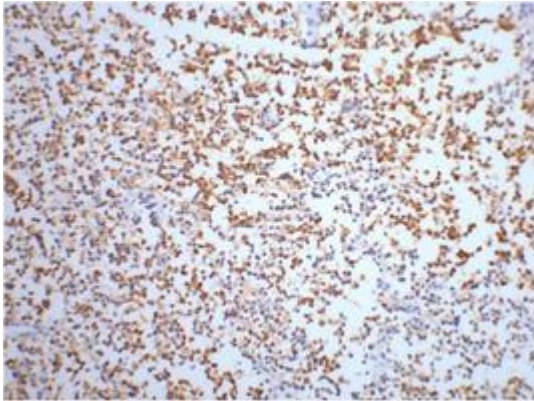
Conjugation: Unconjugated

Modification: Unmodified

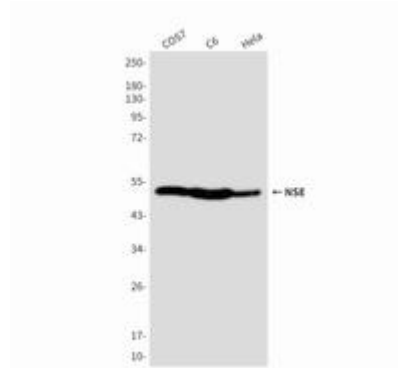
Constituents: PBS (without Mg²⁺ and Ca²⁺), pH 7.3 containing 50% glycerol, 0.5% BSA and 0.02% sodium azide

Research Areas: Signal Transduction

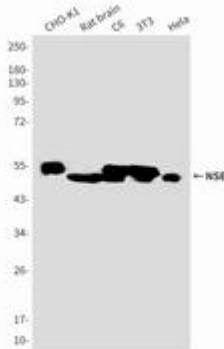
Storage & Shipping: Store at -20°C. Avoid repeated freezing and thawing



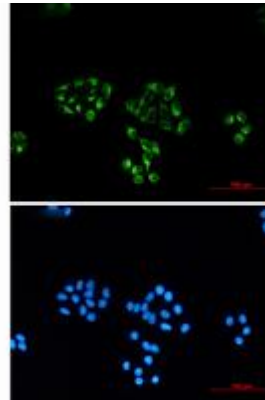
Immunohistochemistry analysis of paraffin-embedded Human small cell carcinoma of lung tissue using NSE antibody. High-pressure and temperature Sodium Citrate pH 6.0 was used for antigen retrieval.



Western blot analysis of Enolase2 in COS7, C6 and HeLa lysates using Enolase2 antibody.



Western blot analysis of NSE (4C7) in CHO-K1, rat brain, C6, 3T3, HeLa lysates using Enolase (4C7) antibody.



Immunocytochemistry analysis of NSE (4C7) (green) in HeLa using NSE (4C7) antibody, and DAPI (blue)