

## NSE RABBIT PAB

**Cat.#:** N226044

**Product Name:** Anti-NSE Rabbit pAb

**Synonyms:** ENO2; Gamma-enolase; 2-phospho-D-glycerate hydro-lyase; Enolase 2; Neural enolase; Neuron-specific enolase; NSE

**UNIPROT ID:** P09104

**Background:** ENO2 an enzyme with 2-phospho-D-glycerate hydro-lyase activity. One of the three enolase isoenzymes found in mammals. This isoenzyme, a homodimer, is found in mature neurons and cells of neuronal origin. A switch from alpha enolase to gamma enolase occurs in neural tissue during development in rats and primates.

**Immunogen:** A synthetic peptide of human NSE

**Applications:** WB,IHC-F,IHC-P,ICC/IF,FC

**Recommended Dilutions:** WB: 1/500-1/1000 IHC: 1/50-1/100 IF: 1/50-1/200 FC: 1/50-1/100

**Host Species:** Rabbit

**Clonality:** Rabbit Polyclonal

**Clone ID:** -

**MW:** Calculated MW: 47 kDa; Observed MW: 47 kDa

**Isotype:** IgG

**Purification:** Affinity Purified

**Species Reactivity:** Human,Mouse,Rat

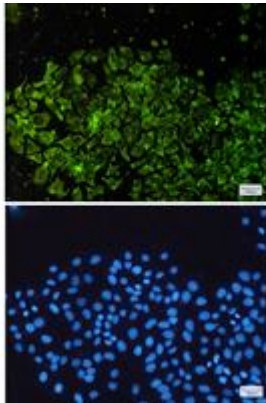
**Conjugation:** Unconjugated

**Modification:** Unmodified

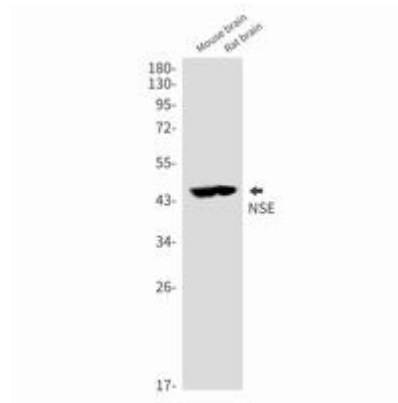
**Constituents:** PBS (without Mg<sup>2+</sup> and Ca<sup>2+</sup>), pH 7.3 containing 50% glycerol, 0.5% BSA and 0.02% sodium azide

**Research Areas:** Signal Transduction

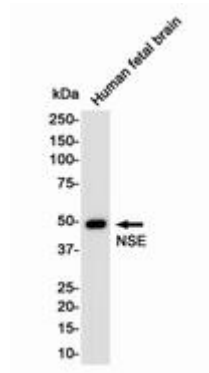
**Storage & Shipping:** Store at -20°C. Avoid repeated freezing and thawing



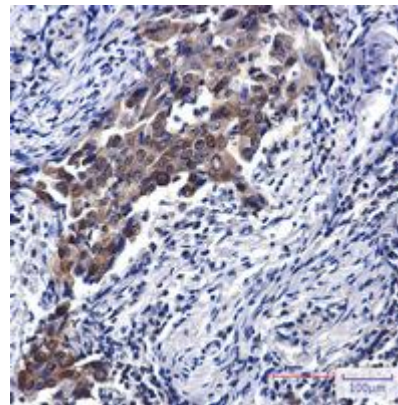
Immunocytochemistry analysis of NSE (green) in Hela using NSE antibody, and DAPI (blue)



Western blot analysis of NSE in mouse brain, rat brain lysates using NSE antibody.



Western blot analysis of Enolase2/NSE in Human Fetal Brain lysates using Enolase2/NSE antibody.



Immunohistochemistry analysis of paraffin-embedded Human lung cancer using NSE antibody. High-pressure and temperature Sodium Citrate pH 6.0 was used for antigen retrieval.