

## NSMCE2 RABBIT PAB

**Cat.#:** S218210

**Product Name:** Anti-NSMCE2 Rabbit Polyclonal Antibody

**Synonyms:** NSE2; MMS21; ZMIZ7; C8orf36

**UNIPROT ID:** Q96MF7 (Gene Accession - BC032797 )

**Background:** NSMCE2 is the E3 SUMO-protein ligase component of the SMC5-SMC6 complex, a complex involved in DNA double-strand breaks by homologous recombination. The complex may promote sister chromatid homologous recombination by recruiting the SMC1-SMC3 cohesin complex to double-strand breaks. NSMCE2 acts as a E3 ligase mediating SUMO attachment to various proteins such as SMC6L1 and TRAX and maybe the cohesin components RAD21 and STAG2. SUMO protein-ligase activity is required for the prevention of DNA damage-induced apoptosis by facilitating DNA repair.

**Immunogen:** Full length fusion protein

**Applications:** ELISA, IHC

**Recommended Dilutions:** IHC: 25-100; ELISA: 5000-10000

**Host Species:** Rabbit

**Clonality:** Rabbit Polyclonal

**Isotype:** Immunogen-specific rabbit IgG

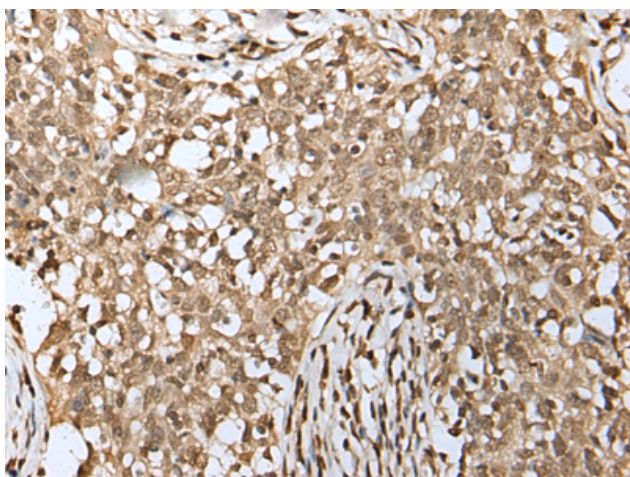
**Purification:** Antigen affinity purification

**Species Reactivity:** Human, Mouse, Rat

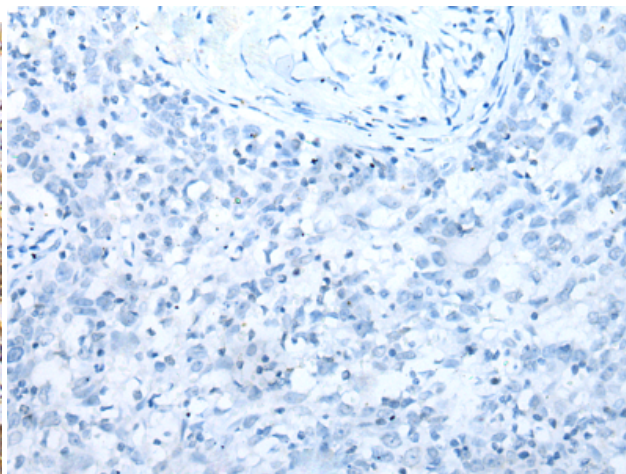
**Constituents:** PBS (without Mg<sup>2+</sup> and Ca<sup>2+</sup>), pH 7.4, 150 mM NaCl, 0.05% Sodium Azide and 40% glycerol

**Research Areas:** Epigenetics and Nuclear Signaling, Cell Biology

**Storage & Shipping:** Store at -20°C. Avoid repeated freezing and thawing



Immunohistochemistry analysis of paraffin embedded Human esophagus cancer tissue using 218210(NSMCE2 Antibody) at a dilution of 1/25(Nucleus).



In comparison with the IHC on the left, the same paraffin-embedded Human esophagus cancer tissue is first treated with the fusion protein and then with 218210(Anti-NSMCE2 Antibody) at dilution 1/25.