

NSUN4 RABBIT PAB

Cat.#: S212569

Product Name: Anti-NSUN4 Rabbit Polyclonal Antibody

Synonyms: SHTAP

UNIPROT ID: Q96CB9 (Gene Accession - BC014441)

Background: Involved in mitochondrial ribosome assembly. 5-methylcytosine rRNA methyltransferase that probably is involved in mitochondrial ribosome small subunit (SSU) maturation by methylation of mitochondrial 12S rRNA; the function is independent of MTERFD2/MTERF4 and assembled mitochondrial ribosome large subunit (LSU). Targeted to LSU by MTERFD2/MTERF4 and probably is involved in a final step in ribosome biogenesis to ensure that SSU and LSU are assembled. In vitro can methylate 16S rRNA of the LSU; the methylation is enhanced by MTERFD/MTERF4.

Immunogen: Fusion protein of human NSUN4

Applications: ELISA, WB, IHC

Recommended Dilutions: IHC: 25-100;WB: 200-1000;ELISA: 5000-10000

Host Species: Rabbit

Clonality: Rabbit Polyclonal

Isotype: Immunogen-specific rabbit IgG

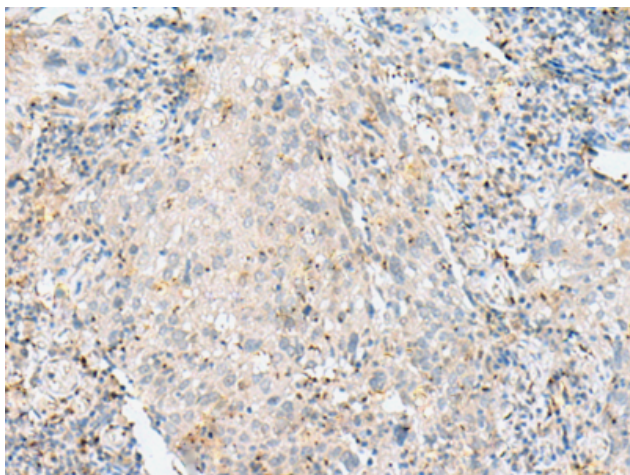
Purification: Antigen affinity purification

Species Reactivity: Human, Mouse

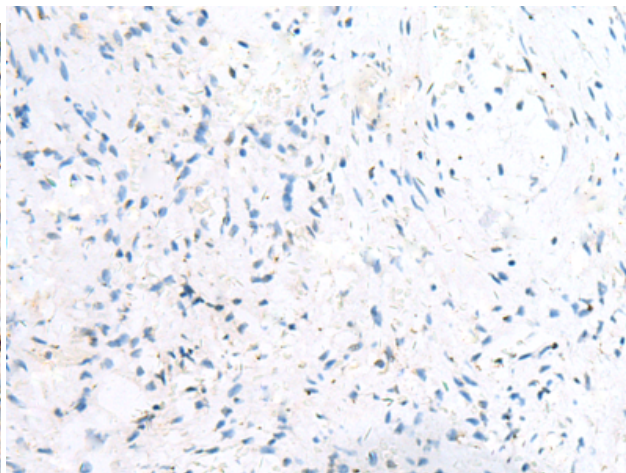
Constituents: PBS (without Mg²⁺ and Ca²⁺), pH 7.4, 150 mM NaCl, 0.05% Sodium Azide and 40% glycerol

Research Areas: Epigenetics and Nuclear Signaling

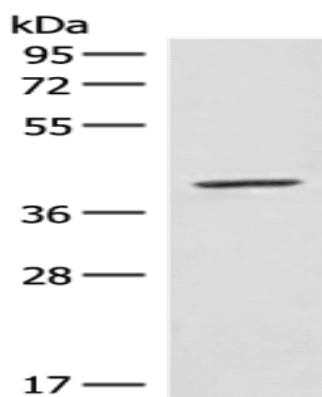
Storage & Shipping: Store at -20°C. Avoid repeated freezing and thawing



Immunohistochemistry analysis of paraffin embedded Human cervical cancer tissue using 212569(NSUN4 Antibody) at a dilution of 1/40(Cytoplasm and Cell membrane).



In comparison with the IHC on the left, the same paraffin-embedded Human cervical cancer tissue is first treated with the fusion protein and then with 212569(Anti-NSUN4 Antibody) at dilution 1/40.



Gel: 8%SDS-PAGE, Lysate: 40 μ g;
Lane: K562 cell lysate;
Primary antibody: 212569(NSUN4 Antibody) at dilution 1/300;
Secondary antibody: Goat anti rabbit IgG at 1/8000 dilution;
Exposure time: 20 seconds