

NT5C1A RABBIT PAB

Cat.#: S211399

Product Name: Anti-NT5C1A Rabbit Polyclonal Antibody

Synonyms: CNI; CNI; CN-I; CN1A; CN-1A

UNIPROT ID: Q9BXI3 (Gene Accession - BC103880)

Background: Cytosolic nucleotidases, such as NT5C1A, dephosphorylate nucleoside monophosphates. Dephosphorylates the 5' and 2'(3')-phosphates of deoxyribonucleotides and has a broad substrate specificity. Helps to regulate adenosine levels in heart during ischemia and hypoxia.

Immunogen: Fusion protein of human NT5C1A

Applications: ELISA, IHC

Recommended Dilutions: IHC: 50-200; ELISA: 2000-5000

Host Species: Rabbit

Clonality: Rabbit Polyclonal

Isotype: Immunogen-specific rabbit IgG

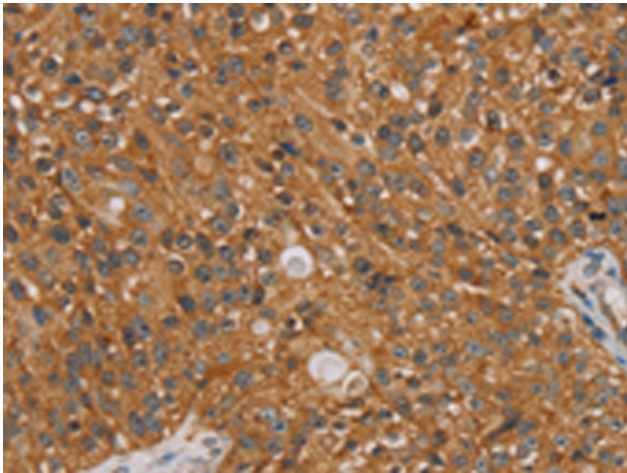
Purification: Antigen affinity purification

Species Reactivity: Human, Mouse

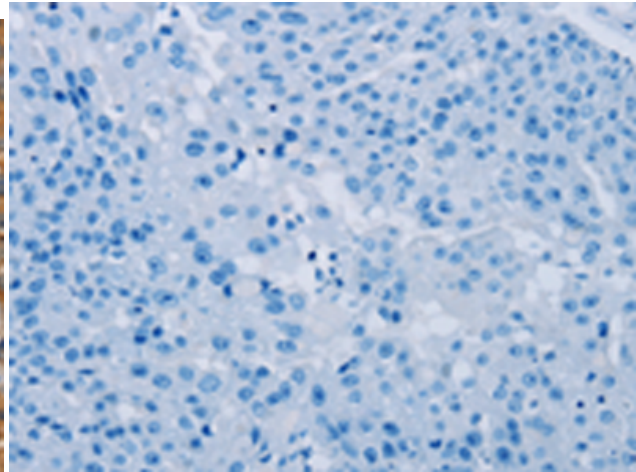
Constituents: PBS (without Mg²⁺ and Ca²⁺), pH 7.4, 150 mM NaCl, 0.05% Sodium Azide and 40% glycerol

Research Areas: Epigenetics and Nuclear Signaling, Cardiovascular

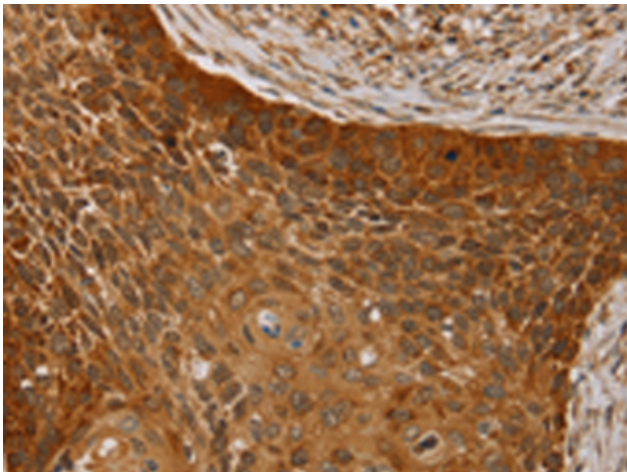
Storage & Shipping: Store at -20°C. Avoid repeated freezing and thawing



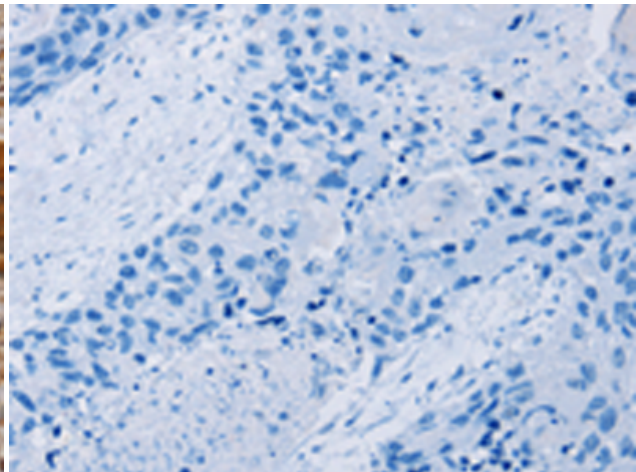
Immunohistochemistry analysis of paraffin embedded Human breast cancer tissue using 211399(NT5C1A Antibody) at a dilution of 1/25(Cytoplasm).



In comparison with the IHC on the left, the same paraffin-embedded Human breast cancer tissue is first treated with the fusion protein and then with 211399(Anti-NT5C1A Antibody) at dilution 1/25.



The image on the left is immunohistochemistry of paraffin-embedded Human esophagus cancer tissue using 211399(Anti-NT5C1A Antibody) at a dilution of 1/25.



In comparison with the IHC on the left, the same paraffin-embedded Human esophagus cancer tissue is first treated with fusion protein and then with D122789(Anti-NT5C1A Antibody) at dilution 1/25.