

## NTE RABBIT PAB

**Cat.#:** N225034

**Product Name:** Anti-NTE Rabbit pAb

**Synonyms:** PNPLA6; NTE; Neuropathy target esterase; Patatin-like phospholipase domain-containing protein 6

**UNIPROT ID:** Q8IY17

**Background:** Phospholipase B that deacylates intracellular phosphatidylcholine (PtdCho), generating glycerophosphocholine (GroPtdCho).

**Immunogen:** The antiserum was produced against synthesized peptide derived from the Internal region of human PNPLA6. AA range:1031-1080

**Applications:** WB,IHC-P,ELISA

**Recommended Dilutions:** WB: 1/500-1/1000 IHC: 1/50-1/100 ELISA: 1/10000

**Host Species:** Rabbit

**Clonality:** Rabbit Polyclonal

**Clone ID:** -

**MW:** Calculated MW: 151 kDa; Observed MW: 151 kDa

**Isotype:** IgG

**Purification:** Affinity Purified

**Species Reactivity:** Human,Mouse,Rat

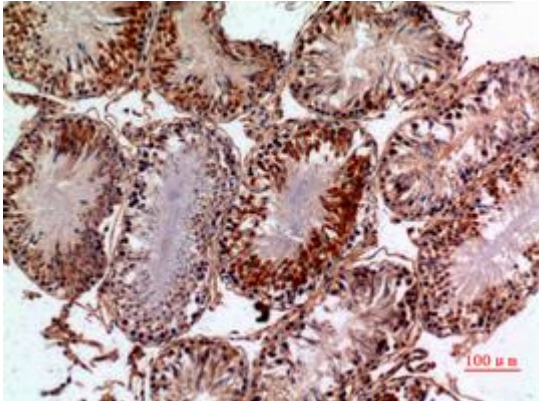
**Conjugation:** Unconjugated

**Modification:** Unmodified

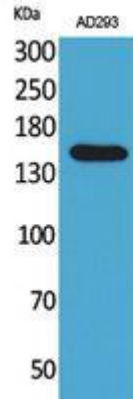
**Constituents:** PBS (without Mg<sup>2+</sup> and Ca<sup>2+</sup>), pH 7.3 containing 50% glycerol, 0.5% BSA and 0.02% sodium azide

**Research Areas:** Neuroscience

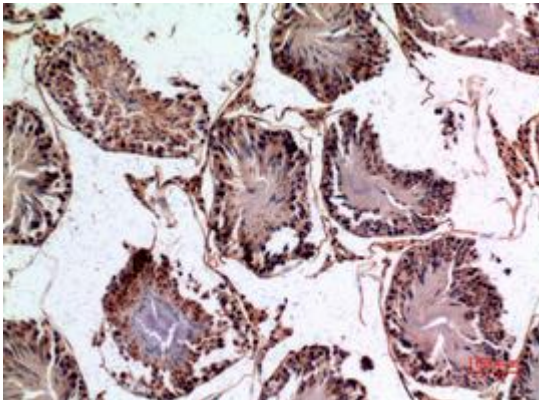
**Storage & Shipping:** Store at -20°C. Avoid repeated freezing and thawing



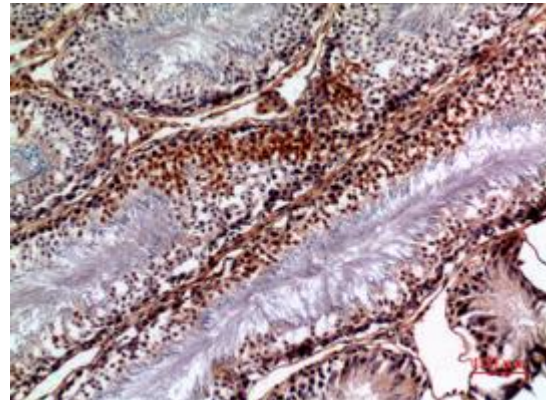
Immunohistochemistry analysis of paraffin-embedded rat testis using NTE antibody. High-pressure and temperature Sodium Citrate pH 6.0 was used for antigen retrieval.



Western blot analysis of NTE in AD293 lysates using NTE antibody.



Immunohistochemistry analysis of paraffin-embedded rat testis using NTE antibody. High-pressure and temperature Sodium Citrate pH 6.0 was used for antigen retrieval.



Immunohistochemistry analysis of paraffin-embedded rat testis using NTE antibody. High-pressure and temperature Sodium Citrate pH 6.0 was used for antigen retrieval.