

## NTF3 RABBIT PAB

**Cat.#:** S210491

**Product Name:** Anti-NTF3 Rabbit Polyclonal Antibody

**Synonyms:** NT3; HDNF; NGF2; NT-3; NGF-2

**UNIPROT ID:** P20783 (Gene Accession - BC107075 )

**Background:** The protein encoded by this gene is a member of the neurotrophin family, that controls survival and differentiation of mammalian neurons. This protein is closely related to both nerve growth factor and brain-derived neurotrophic factor. It may be involved in the maintenance of the adult nervous system, and may affect development of neurons in the embryo when it is expressed in human placenta. NTF3-deficient mice generated by gene targeting display severe movement defects of the limbs. The mature peptide of this protein is identical in all mammals examined including human, pig, rat and mouse.

**Immunogen:** Fusion protein of human NTF3

**Applications:** ELISA, IHC

**Recommended Dilutions:** IHC: 250-500; ELISA: 5000-10000

**Host Species:** Rabbit

**Clonality:** Rabbit Polyclonal

**Isotype:** Immunogen-specific rabbit IgG

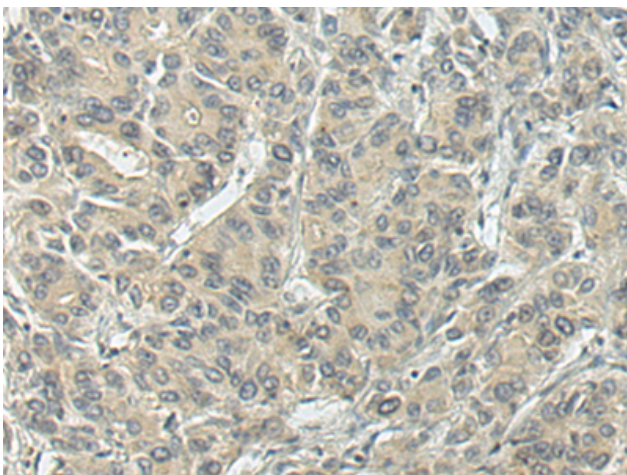
**Purification:** Antigen affinity purification

**Species Reactivity:** Human, Mouse, Rat

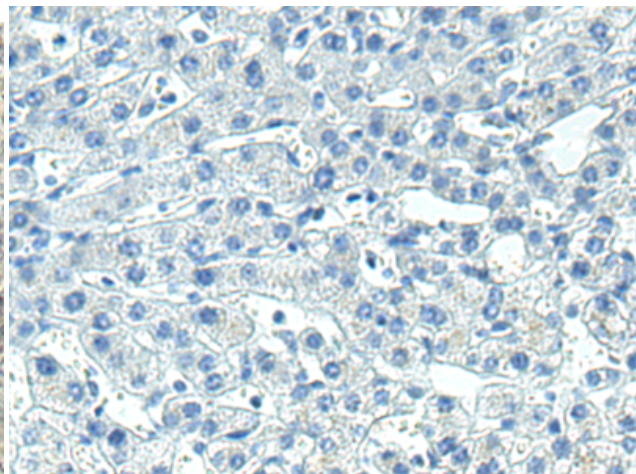
**Constituents:** PBS (without Mg<sup>2+</sup> and Ca<sup>2+</sup>), pH 7.4, 150 mM NaCl, 0.05% Sodium Azide and 40% glycerol

**Research Areas:** Neuroscience

**Storage & Shipping:** Store at -20°C. Avoid repeated freezing and thawing



Immunohistochemistry analysis of paraffin embedded Human liver cancer tissue using 210491(NTF3 Antibody) at a dilution of 1/280(Secreted).



In comparison with the IHC on the left, the same paraffin-embedded Human liver cancer tissue is first treated with the fusion protein and then with 210491(Anti-NTF3 Antibody) at dilution 1/280.