

NTMT1 RABBIT PAB

Cat.#: S217600

Product Name: Anti-NTMT1 Rabbit Polyclonal Antibody

Synonyms: NRMT; NTM1A; AD-003; HOMET1A; C9orf32; METTL11A

UNIPROT ID: Q9BV86 (Gene Accession - BC001396)

Background: The METTL11A gene encodes an N-terminal methyltransferase for the RAN (MIM 601179) guanine nucleotide exchange factor regulator of chromosome condensation 1 (RCC1; MIM 179710). METTL11A enzyme alpha-N-methylates other protein targets such as SET.

Immunogen: Fusion protein of human NTMT1

Applications: ELISA, IHC

Recommended Dilutions: IHC: 50-200; ELISA: 2000-5000

Host Species: Rabbit

Clonality: Rabbit Polyclonal

Isotype: Immunogen-specific rabbit IgG

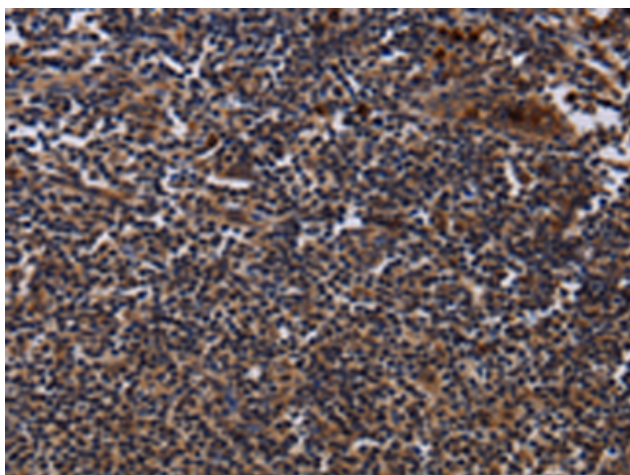
Purification: Antigen affinity purification

Species Reactivity: Human, Mouse, Rat

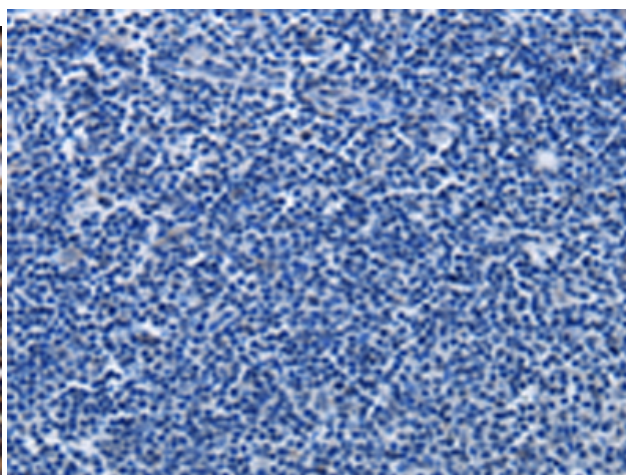
Constituents: PBS (without Mg²⁺ and Ca²⁺), pH 7.4, 150 mM NaCl, 0.05% Sodium Azide and 40% glycerol

Research Areas: Cancer

Storage & Shipping: Store at -20°C. Avoid repeated freezing and thawing



Immunohistochemistry analysis of paraffin embedded Human tonsil tissue using 217600(NTMT1 Antibody) at a dilution of 1/40(Cytoplasm).



In comparison with the IHC on the left, the same paraffin-embedded Human tonsil tissue is first treated with the fusion protein and then with 217600(Anti-NTMT1 Antibody) at dilution 1/40.