

NUBP2 RABBIT PAB

Cat.#: S218618

Product Name: Anti-NUBP2 Rabbit Polyclonal Antibody

Synonyms: CFD1; NBP 2; NUBP1

UNIPROT ID: Q9Y5Y2 (Gene Accession - BC008005)

Background: This gene encodes an adenosine triphosphate (ATP) and metal-binding protein that is required for the assembly of cytosolic iron-sulfur proteins. The encoded protein functions in a heterotetramer with nucleotide-binding protein 1 (NUBP1). Alternative splicing results in multiple transcript variants.

Immunogen: Full length fusion protein

Applications: ELISA, IHC

Recommended Dilutions: IHC: 25-100; ELISA: 5000-10000

Host Species: Rabbit

Clonality: Rabbit Polyclonal

Isotype: Immunogen-specific rabbit IgG

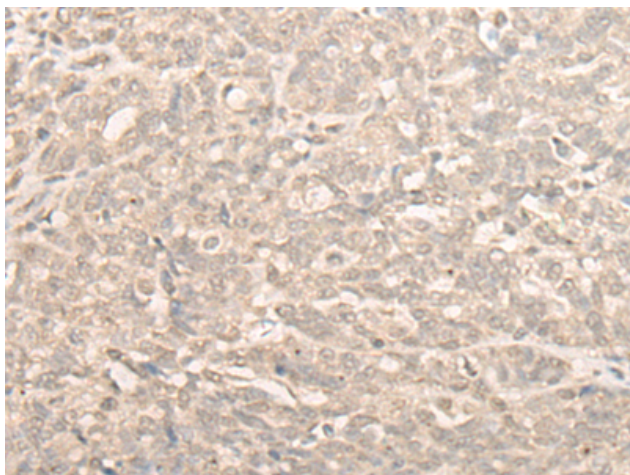
Purification: Antigen affinity purification

Species Reactivity: Human, Mouse, Rat

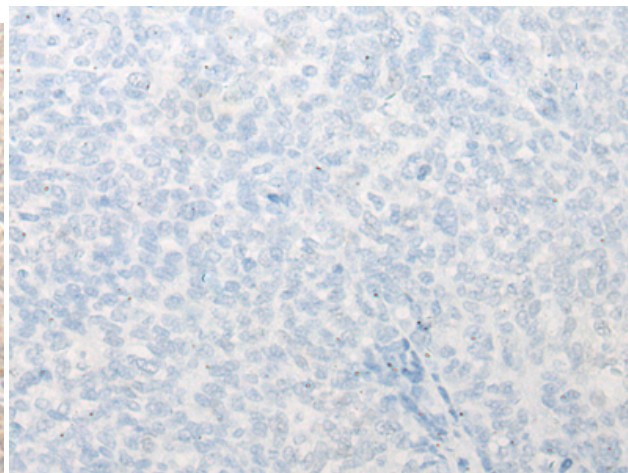
Constituents: PBS (without Mg²⁺ and Ca²⁺), pH 7.4, 150 mM NaCl, 0.05% Sodium Azide and 40% glycerol

Research Areas: Metabolism, Cancer

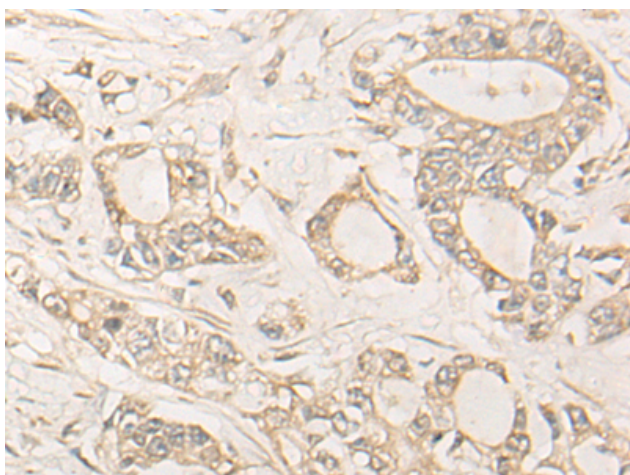
Storage & Shipping: Store at -20°C. Avoid repeated freezing and thawing



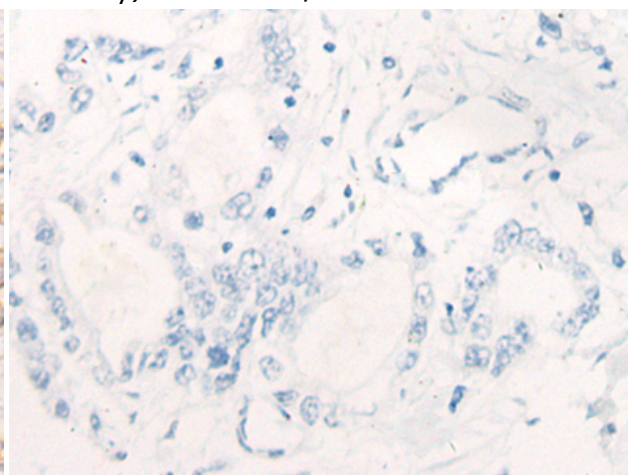
Immunohistochemistry analysis of paraffin-embedded Human ovarian cancer tissue using 218618 (NUBP2 Antibody) at a dilution of 1/20 (Cytoplasm and Nucleus).



In comparison with the IHC on the left, the same paraffin-embedded Human ovarian cancer tissue is first treated with the fusion protein and then with 218618 (Anti-NUBP2 Antibody) at dilution 1/20.



The image on the left is immunohistochemistry of paraffin-embedded Human gastric cancer tissue using 218618 (Anti-NUBP2 Antibody) at a dilution of 1/20.



In comparison with the IHC on the left, the same paraffin-embedded Human gastric cancer tissue is first treated with fusion protein and then with D224813 (Anti-NUBP2 Antibody) at dilution 1/20.