

## NUCB2 RABBIT PAB

**Cat.#:** S220740

**Product Name:** Anti-NUCB2 Rabbit Polyclonal Antibody

**Synonyms:** NEFA; HEL-S-109

**UNIPROT ID:** P80303 (Gene Accession - NP\_005004 )

**Background:** This gene encodes a protein with a suggested role in calcium level maintenance, eating regulation in the hypothalamus, and release of tumor necrosis factor from vascular endothelial cells. This protein binds calcium and has EF-folding domains.

**Immunogen:** Synthetic peptide of human NUCB2

**Applications:** ELISA, IHC

**Recommended Dilutions:** IHC: 50-100; ELISA: 5000-10000

**Host Species:** Rabbit

**Clonality:** Rabbit Polyclonal

**Isotype:** Immunogen-specific rabbit IgG

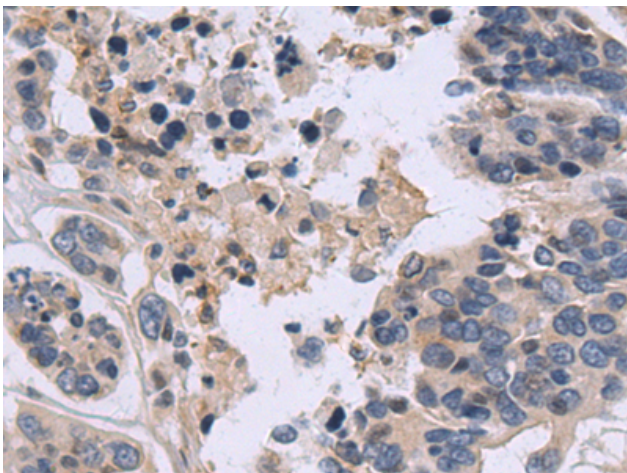
**Purification:** Antigen affinity purification

**Species Reactivity:** Human

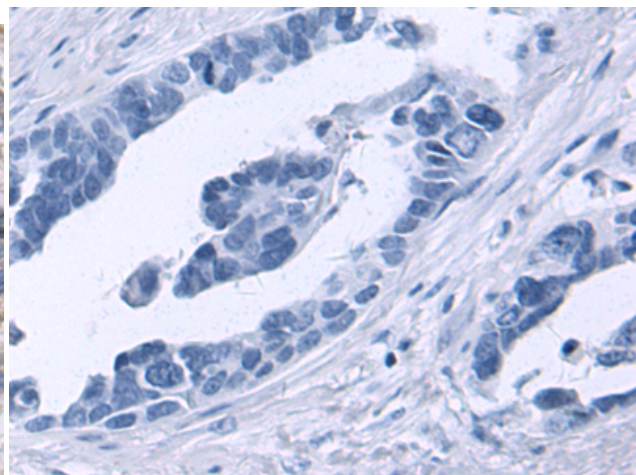
**Constituents:** PBS (without Mg<sup>2+</sup> and Ca<sup>2+</sup>), pH 7.4, 150 mM NaCl, 0.05% Sodium Azide and 40% glycerol

**Research Areas:** Signal Transduction, Epigenetics and Nuclear Signaling

**Storage & Shipping:** Store at -20°C. Avoid repeated freezing and thawing



Immunohistochemistry analysis of paraffin embedded Human colorectal cancer tissue using 220740 (NUCB2 Antibody) at a dilution of 1/50 (Secreted).



In comparison with the IHC on the left, the same paraffin-embedded Human colorectal cancer tissue is first treated with the synthetic peptide and then with 220740 (Anti-NUCB2 Antibody) at dilution 1/50.