

## NUDT10 RABBIT PAB

**Cat.#:** S218138

**Product Name:** Anti-NUDT10 Rabbit Polyclonal Antibody

**Synonyms:** APS2; DIPP3a; DIPP3-alpha

**UNIPROT ID:** Q8NFP7 (Gene Accession - BC049383 )

**Background:** This gene is a member of the nudix (nucleoside diphosphate linked moiety X)-type motif containing family. The encoded protein is a phosphohydrolase and may regulate the turnover of diphosphoinositol polyphosphates. The turnover of these high-energy diphosphoinositol polyphosphates represents a molecular switching activity with important regulatory consequences. Molecular switching by diphosphoinositol polyphosphates may contribute to the regulation of intracellular trafficking. In some populations putative prostate cancer susceptibility alleles have been identified for this gene.

**Immunogen:** Full length fusion protein

**Applications:** ELISA, WB, IHC

**Recommended Dilutions:** IHC: 60-450;WB: 1000-5000;ELISA: 5000-10000

**Host Species:** Rabbit

**Clonality:** Rabbit Polyclonal

**Isotype:** Immunogen-specific rabbit IgG

**Purification:** Antigen affinity purification

**Species Reactivity:** Human, Mouse

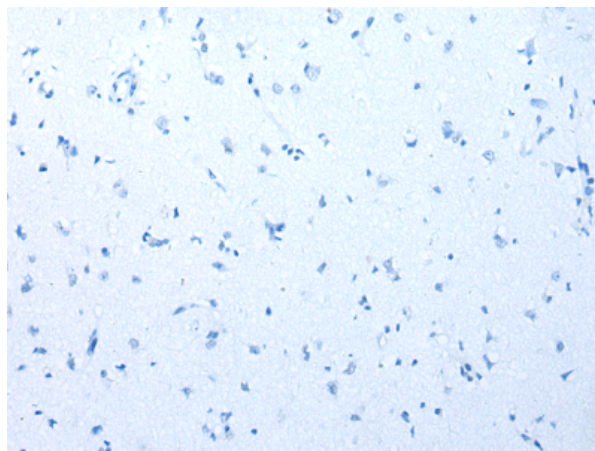
**Constituents:** PBS (without Mg<sup>2+</sup> and Ca<sup>2+</sup>), pH 7.4, 150 mM NaCl, 0.05% Sodium Azide and 40% glycerol

**Research Areas:** Metabolism

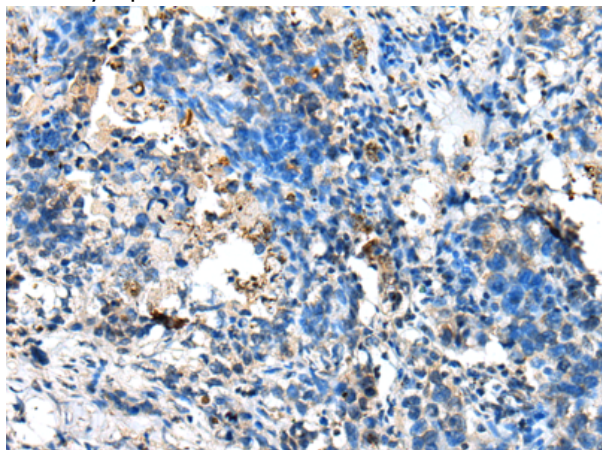
**Storage & Shipping:** Store at -20°C. Avoid repeated freezing and thawing



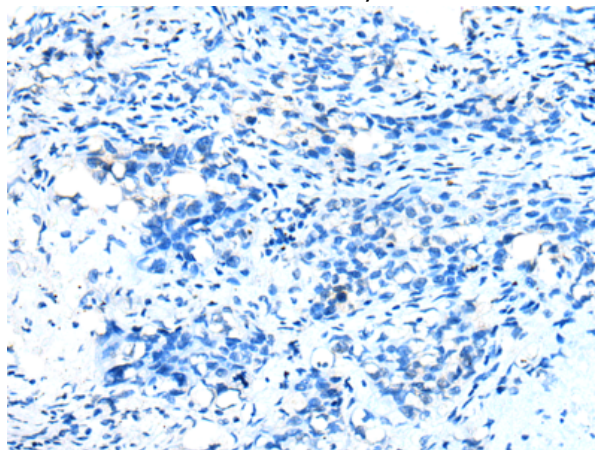
Immunohistochemistry analysis of paraffin embedded Human brain tissue using 218138(NUDT10 Antibody) at a dilution of 1/70(Cytoplasm).



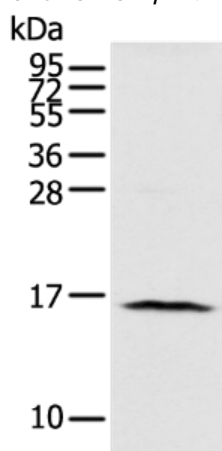
In comparison with the IHC on the left, the same paraffin-embedded Human brain tissue is first treated with the fusion protein and then with 218138(Anti-NUDT10 Antibody) at dilution 1/70.



The image on the left is immunohistochemistry of paraffin-embedded Human lung cancer tissue using 218138(Anti-NUDT10 Antibody) at a dilution of 1/70.



In comparison with the IHC on the left, the same paraffin-embedded Human lung cancer tissue is first treated with fusion protein and then with D223796(Anti-NUDT10 Antibody) at dilution 1/70.



Gel: 12%SDS-PAGE, Lysate: 40 µg;  
Lane: 293T cell;  
Primary antibody: 218138(NUDT10 Antibody) at dilution 1/800;  
Secondary antibody: Goat anti rabbit IgG at 1/8000 dilution;  
Exposure time: 1 minute



# Product Description

Pioneering GTPase and Oncogene Product Development since 2010

---