

NUDT19 RABBIT PAB

Cat.#: S221335

Product Name: Anti-NUDT19 Rabbit Polyclonal Antibody

Synonyms: RP2

UNIPROT ID: A8MXV4 (Gene Accession - NP_001099040)

Background: NUDT19 (nudix (nucleoside diphosphate linked moiety X)-type motif 19), also known as RP2, is a 375 amino acid protein and coenzyme A diphosphatase that assists in the hydrolysis of CoA esters. A member of the nudix hydrolase family, NUDT19 contains one nudix hydrolase domain and localizes to both mitochondria and peroxisome. NUDT19 utilizes magnesium and/or manganese as cofactors and is encoded by a gene that maps to human chromosome 19q13.11. Chromosome 19 consists of over 63 million bases, houses approximately 1,400 genes and is recognized for having the greatest gene density of the human chromosomes.

Immunogen: Synthetic peptide of human NUDT19

Applications: ELISA, WB, IHC

Recommended Dilutions: IHC: 25-100;WB: 500-2000;ELISA: 5000-10000

Host Species: Rabbit

Clonality: Rabbit Polyclonal

Isotype: Immunogen-specific rabbit IgG

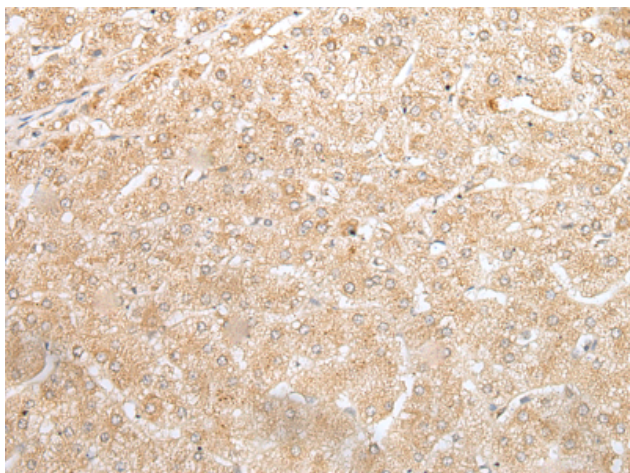
Purification: Antigen affinity purification

Species Reactivity: Human

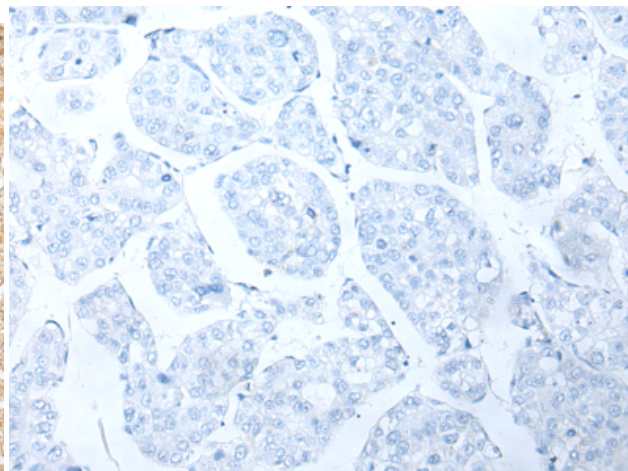
Constituents: PBS (without Mg²⁺ and Ca²⁺), pH 7.4, 150 mM NaCl, 0.05% Sodium Azide and 40% glycerol

Research Areas: Metabolism, Signal Transduction

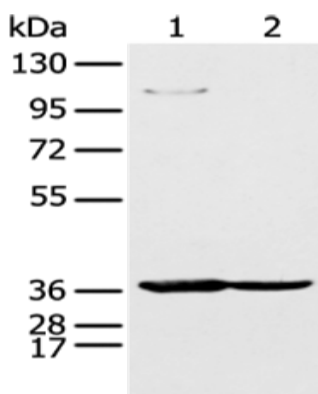
Storage & Shipping: Store at -20°C. Avoid repeated freezing and thawing



Immunohistochemistry analysis of paraffin embedded Human liver cancer tissue using 221335(NUDT19 Antibody) at a dilution of 1/25(Cytoplasm).



In comparison with the IHC on the left, the same paraffin-embedded Human liver cancer tissue is first treated with the synthetic peptide and then with 221335(Anti-NUDT19 Antibody) at dilution 1/25.



Gel: 8%SDS-PAGE, Lysate: 40 μ g;
 Lane 1-2: 293T and K562 cell;
 Primary antibody: 221335(NUDT19 Antibody) at dilution 1/350;
 Secondary antibody: Goat anti rabbit IgG at 1/8000 dilution;
 Exposure time: 3 seconds