

NUDT5 RABBIT PAB

Cat.#: S221333

Product Name: Anti-NUDT5 Rabbit Polyclonal Antibody

Synonyms: YSA1; YSA1H; YSAH1; hYSAH1

UNIPROT ID: Q9UKK9 (Gene Accession - NP_054861)

Background: This gene belongs to the Nudix (nucleoside diphosphate linked moiety X) hydrolase superfamily. The encoded enzyme catalyzes the hydrolysis of modified nucleoside diphosphates, including ADP-ribose (ADPR) and 8-oxoGua-containing 8-oxo-dADP and 8-oxo-dGDP. Protein-bound ADP ribose can be hazardous to the cell because it can modify some amino acid residues, resulting in the inhibition of ATP-activated potassium channels. 8-oxoGua is an oxidized form of guanine that can potentially alter genetic information by pairing with adenine and cytosine in RNA.

Immunogen: Synthetic peptide of human NUDT5

Applications: ELISA, WB, IHC

Recommended Dilutions: IHC: Oct-50;WB: 200-1000;ELISA: 5000-10000

Host Species: Rabbit

Clonality: Rabbit Polyclonal

Isotype: Immunogen-specific rabbit IgG

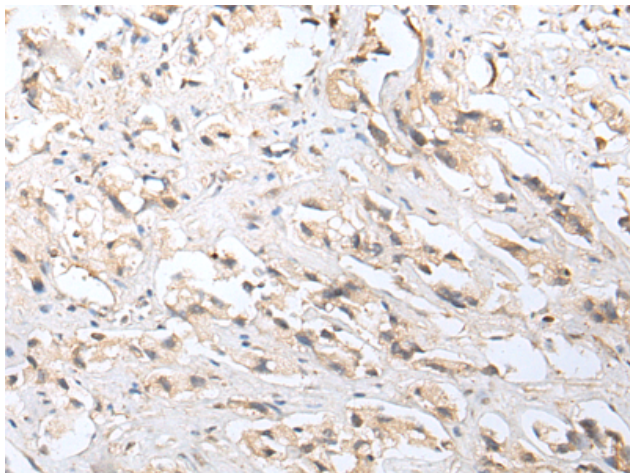
Purification: Antigen affinity purification

Species Reactivity: Human, Mouse, Rat

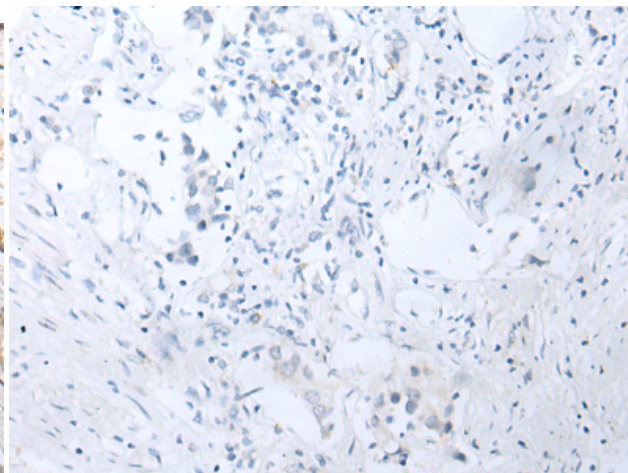
Constituents: PBS (without Mg²⁺ and Ca²⁺), pH 7.4, 150 mM NaCl, 0.05% Sodium Azide and 40% glycerol

Research Areas: Metabolism, Epigenetics and Nuclear Signaling

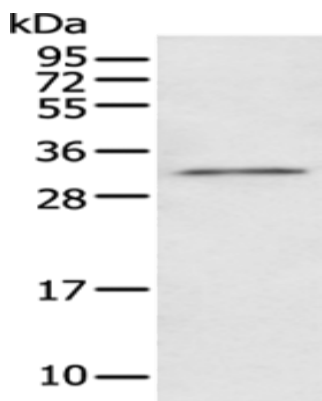
Storage & Shipping: Store at -20°C. Avoid repeated freezing and thawing



Immunohistochemistry analysis of paraffin embedded Human prostate cancer tissue using 221333 (NUDT5 Antibody) at a dilution of 1/20 (Cytoplasm).



In comparison with the IHC on the left, the same paraffin-embedded Human prostate cancer tissue is first treated with the synthetic peptide and then with 221333 (Anti-NUDT5 Antibody) at dilution 1/20.



Gel: 12% SDS-PAGE, Lysate: 40 μ g;
Lane: A431 cell;
Primary antibody: 221333 (NUDT5 Antibody) at dilution 1/200;
Secondary antibody: Goat anti rabbit IgG at 1/8000 dilution;
Exposure time: 1 minute