

NUDT8 RABBIT PAB

Cat.#: S221334

Product Name: Anti-NUDT8 Rabbit Polyclonal Antibody

Synonyms:

UNIPROT ID: Q8WV74 (Gene Accession - NP_001230679)

Background: Predicted to enable magnesium ion binding activity and manganese ion binding activity. Predicted to be involved in purine nucleoside bisphosphate catabolic process. Predicted to be located in mitochondrion.

Immunogen: Synthetic peptide of human NUDT8

Applications: ELISA, IHC

Recommended Dilutions: IHC: 50-200; ELISA: 5000-10000

Host Species: Rabbit

Clonality: Rabbit Polyclonal

Isotype: Immunogen-specific rabbit IgG

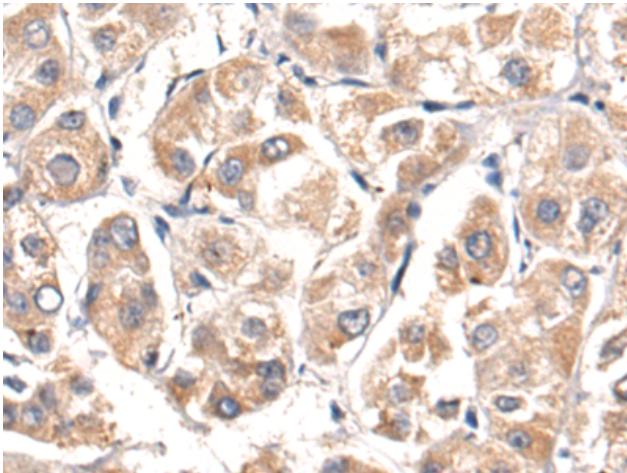
Purification: Antigen affinity purification

Species Reactivity: Human, Mouse

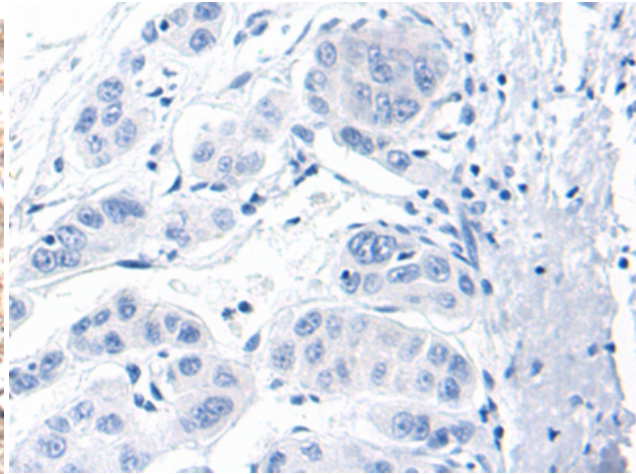
Constituents: PBS (without Mg²⁺ and Ca²⁺), pH 7.4, 150 mM NaCl, 0.05% Sodium Azide and 40% glycerol

Research Areas: Metabolism

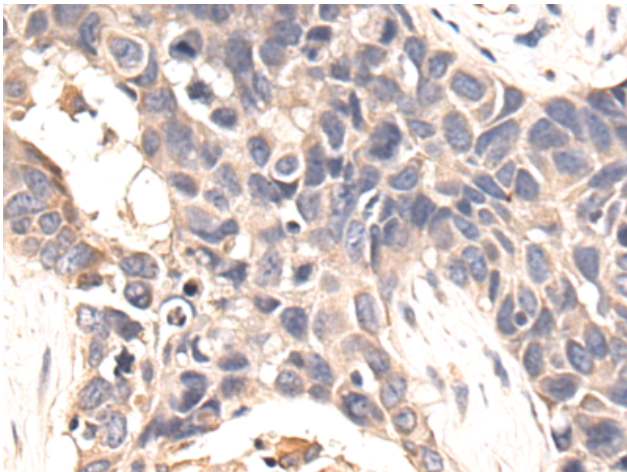
Storage & Shipping: Store at -20°C. Avoid repeated freezing and thawing



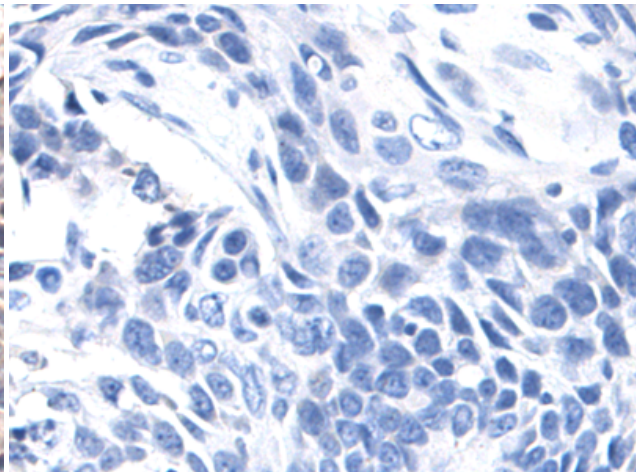
Immunohistochemistry analysis of paraffin embedded Human liver cancer tissue using 221334(NUDT8 Antibody) at a dilution of 1/50(Cytoplasm).



In comparison with the IHC on the left, the same paraffin-embedded Human liver cancer tissue is first treated with the synthetic peptide and then with 221334(Anti-NUDT8 Antibody) at dilution 1/50.



The image on the left is immunohistochemistry of paraffin-embedded Human lung cancer tissue using 221334(Anti-NUDT8 Antibody) at a dilution of 1/50.



In comparison with the IHC on the left, the same paraffin-embedded Human lung cancer tissue is first treated with synthetic peptide and then with D262882(Anti-NUDT8 Antibody) at dilution 1/50.