

NUP155 RABBIT MAB

Cat.#: N263464

Product Name: Anti-NUP155 Rabbit Monoclonal Antibody

Synonyms: N155; ATFB15

UNIPROT ID: O75694

Background: Essential component of nuclear pore complex.

Immunogen: Recombinant protein of human NUP155

Applications: WB, ICC/IF

Recommended Dilutions: WB: 1/500-1/1000 IF: 1/50-1/200

Host Species: Rabbit

Clonality: Rabbit Monoclonal

Clone ID: R03-6F7

MW: Calculated MW: 155 kDa; Observed MW: 155 kDa

Isotype: IgG

Purification: Affinity Purified

Species Reactivity: Human

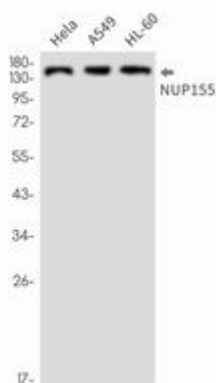
Conjugation: Unconjugated

Modification: Unmodified

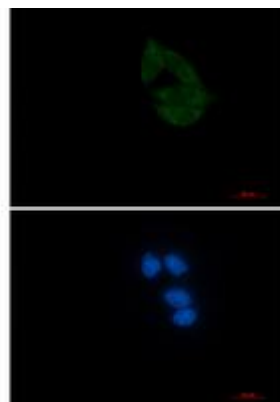
Constituents: PBS (without Mg²⁺ and Ca²⁺), pH 7.3 containing 50% glycerol, 0.5% BSA and 0.02% sodium azide

Research Areas: Tags & Cell Markers

Storage & Shipping: Store at -20°C. Avoid repeated freezing and thawing



Western blot analysis of NUP155 in HeLa, A549, HL-60 lysates using NUP155 antibody.



Immunocytochemistry analysis of NUP155 (green) in HeLa using NUP155 antibody, and DAPI (blue).



Product Description

Pioneering GTPase and Oncogene Product Development since 2010
