

## NUP50 RABBIT MAB

**Cat.#:** N263466

**Product Name:** Anti-NUP50 Rabbit Monoclonal Antibody

**Synonyms:** NPAP60; NPAP60L

**UNIPROT ID:** Q9UKX7

**Background:** Component of the nuclear pore complex that has a direct role in nuclear protein import.

**Immunogen:** A synthetic peptide of human NUP50

**Applications:** WB, ICC/IF

**Recommended Dilutions:** WB: 1/500-1/1000 IF: 1/50-1/200

**Host Species:** Rabbit

**Clonality:** Rabbit Monoclonal

**Clone ID:** R02-3H1

**MW:** Calculated MW: 50 kDa; Observed MW: 50 kDa

**Isotype:** IgG

**Purification:** Affinity Purified

**Species Reactivity:** Human, Rat

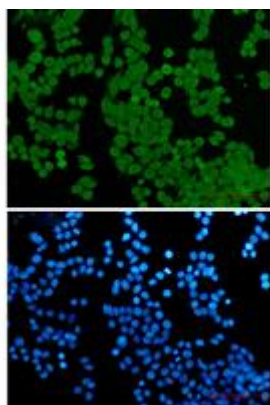
**Conjugation:** Unconjugated

**Modification:** Unmodified

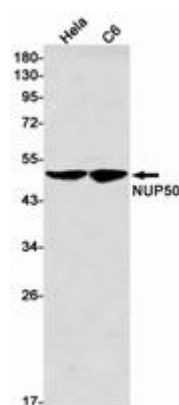
**Constituents:** PBS (without Mg<sup>2+</sup> and Ca<sup>2+</sup>), pH 7.3 containing 50% glycerol, 0.5% BSA and 0.02% sodium azide

**Research Areas:** -

**Storage & Shipping:** Store at -20°C. Avoid repeated freezing and thawing



Immunocytochemistry analysis of NUP50 (green) in HeLa cells using NUP50 antibody, and DAPI (blue) staining.



Western blot analysis of NUP50 in HeLa, C6 lysates using NUP50 antibody.



# Product Description

Pioneering GTPase and Oncogene Product Development since 2010

---