

NUT RABBIT PAB

Cat.#: N225225

Product Name: Anti-NUT Rabbit pAb

Synonyms: Protein NUT (Nuclear protein in Tis)

UNIPROT ID: Q86Y26

Background: Plays a role in the regulation of proliferation.

Immunogen: Synthesized peptide derived from human NUT. at AA range: 1082-1131

Applications: WB,ELISA

Recommended Dilutions: WB: 1/500-1/1000 ELISA: 1/10000

Host Species: Rabbit

Clonality: Rabbit Polyclonal

Clone ID: -

MW: Calculated MW: 120 kDa; Observed MW: 63 kDa

Isotype: IgG

Purification: Affinity Purified

Species Reactivity: Human

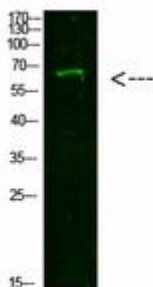
Conjugation: Unconjugated

Modification: Unmodified

Constituents: PBS (without Mg²⁺ and Ca²⁺), pH 7.3 containing 50% glycerol, 0.5% BSA and 0.02% sodium azide

Research Areas: Cancer

Storage & Shipping: Store at -20°C. Avoid repeated freezing and thawing



Western blot analysis of NUT in 293T lysates using NUT antibody.